

Experience with Dust Measurements in Three Dutch Museums

W. Wei¹, I. Joosten¹, K. Keim¹, H. Douna², M. Reuss³, and J.
Wagemakers⁴

¹Netherlands Institute for Cultural Heritage, Amsterdam

²DPM Project Management, Den Haag

³National Museum of Ethnology, Leiden

⁴Museum de Gevangenpoort, Den Haag

instituut
collectie
nederland





instituut
collectie
nederland



ONDER
ONSSIM
LTUUR
NEM
SCHAP

DUST!



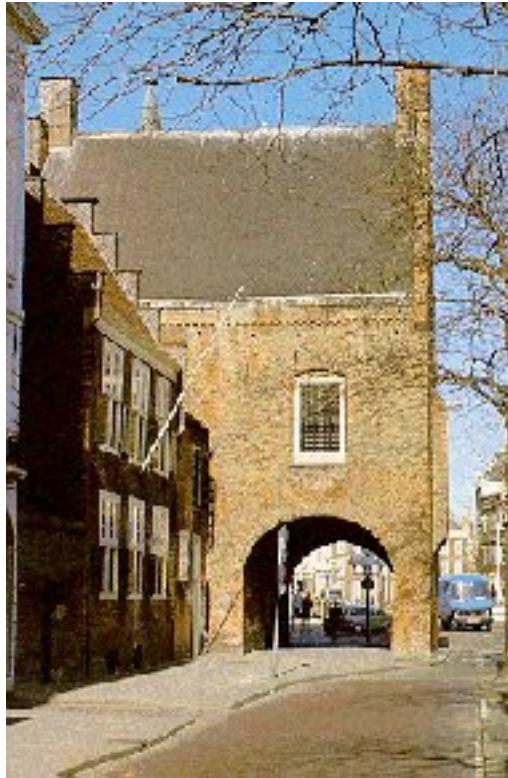
instituut
collectie
nederland



Objectives

- **NOT** to define what “too much dust” is
- Development of a simple method for monitoring dust accumulation, e.g.:
 - before, during, and after construction
 - visitor impact
- **Assist** in defining what “too much dust” is

Museum Gevangenpoort and Galerij Prins Willem V

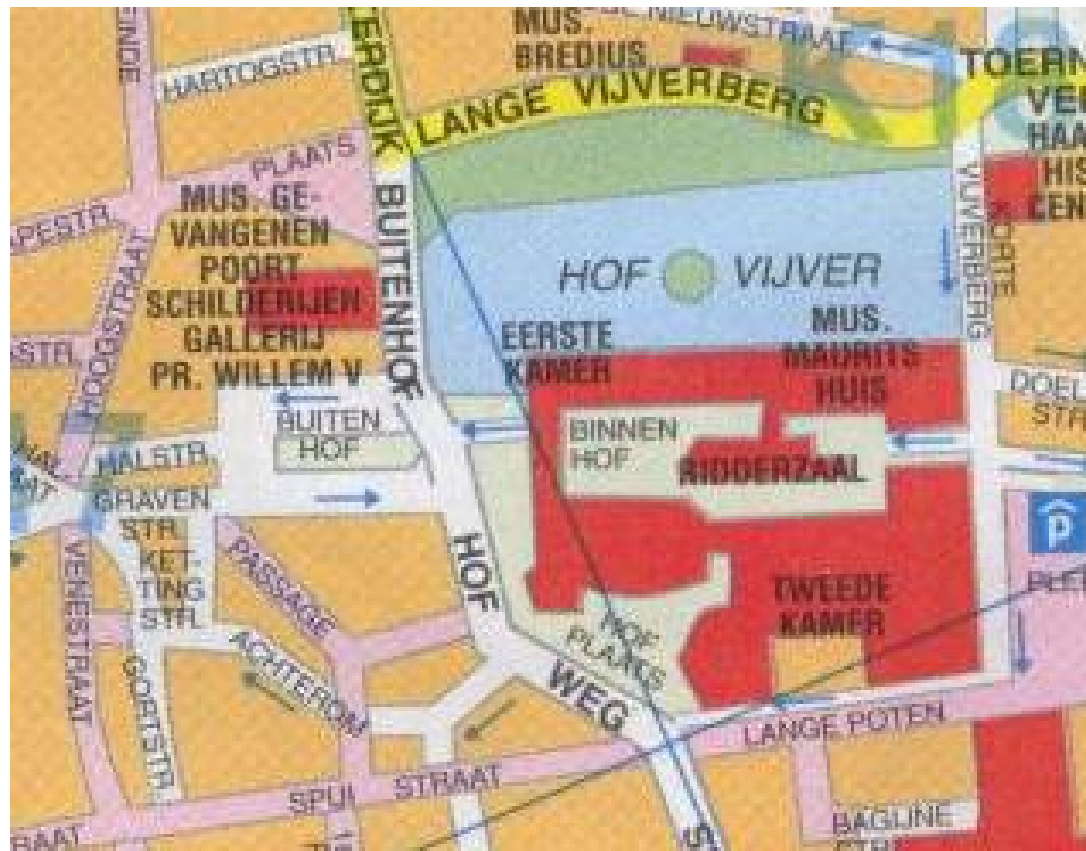


<http://www.gevangenpoort.nl/>

instituut
collectie
nederland



Gevangenpoort/Galerij Willem V



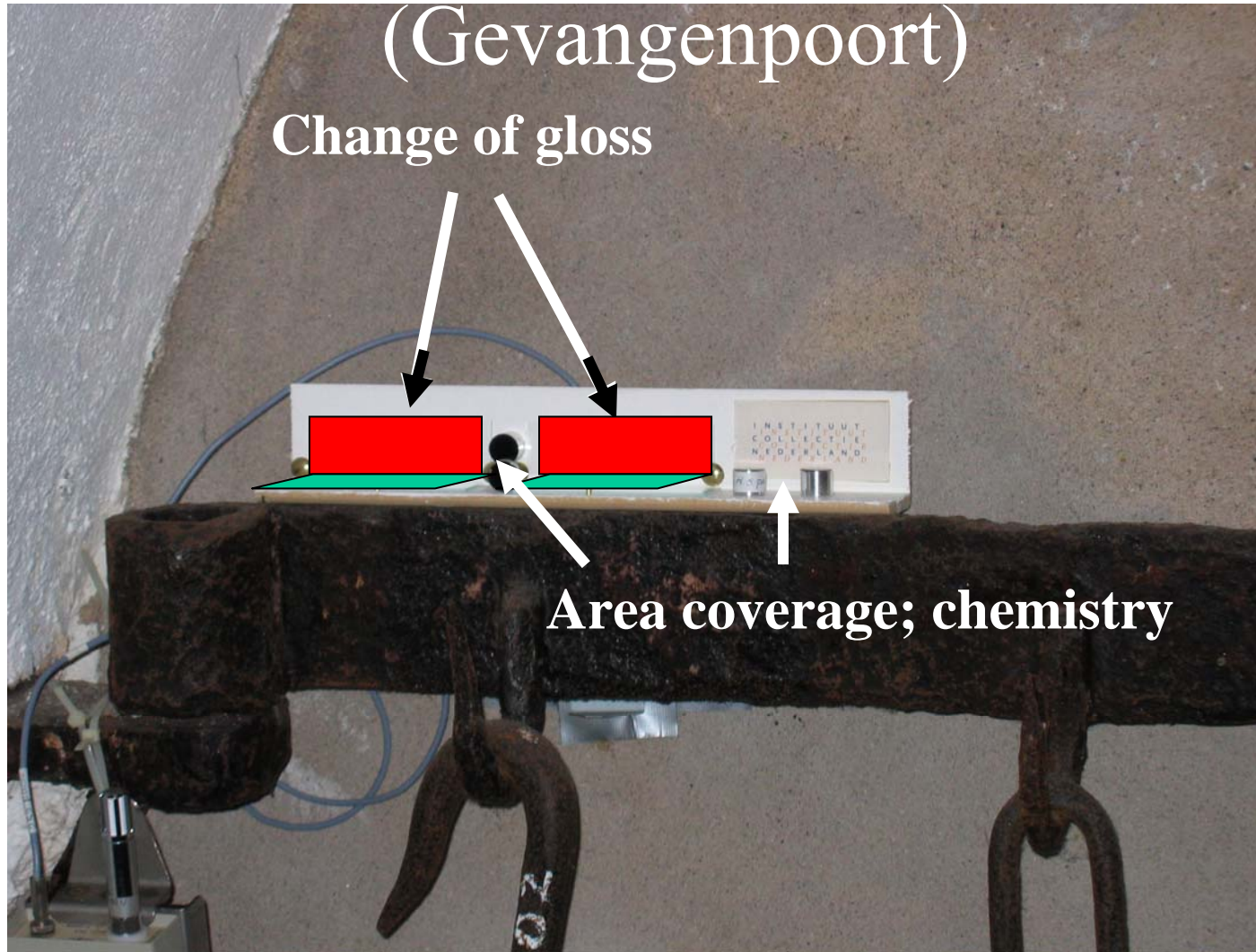
National Museum of Ethnography Leiden



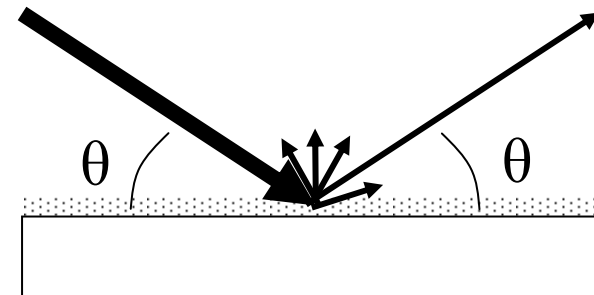
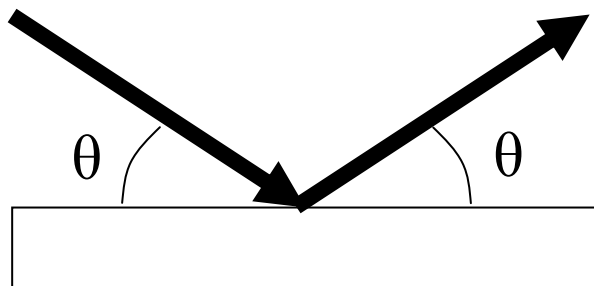
instituut
collectie
nederland



Dust monitoring technique



Glossmeter



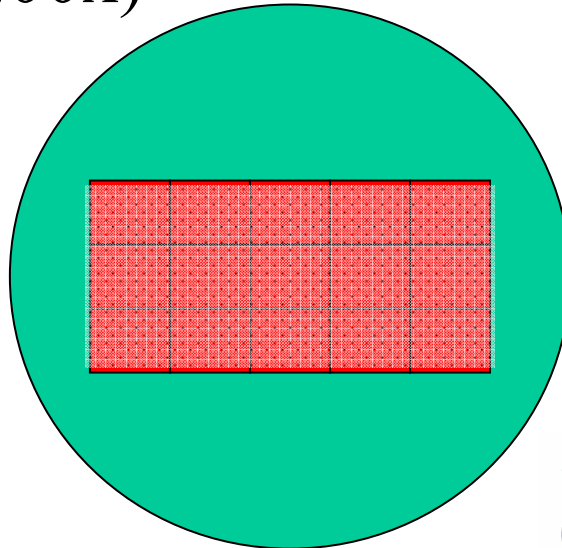
$\Theta = 20, 60, 85^\circ$

Measurement of change in gloss

- **Rate of change** in gloss: horizontal and vertical surfaces; paintings = varnished (vertical) surfaces
- How and how often?
 - Slides cleaned with “dust-free” cloth
 - Once a week/month with “new” glass slide
 - “Permanent” slides (once in several months)
- Statistics?
 - Slides cleaned with “dust-free” cloth
 - Reusing slides

Measurement of coverage area and chemistry

- Use of standard carbon stickers in SEM
- Semi-automated EDS analysis of particles
- Image J area analysis of standard area on sticker
(15 photo's at 200x)



Gevangenpoort



Galerij Prins Willem V

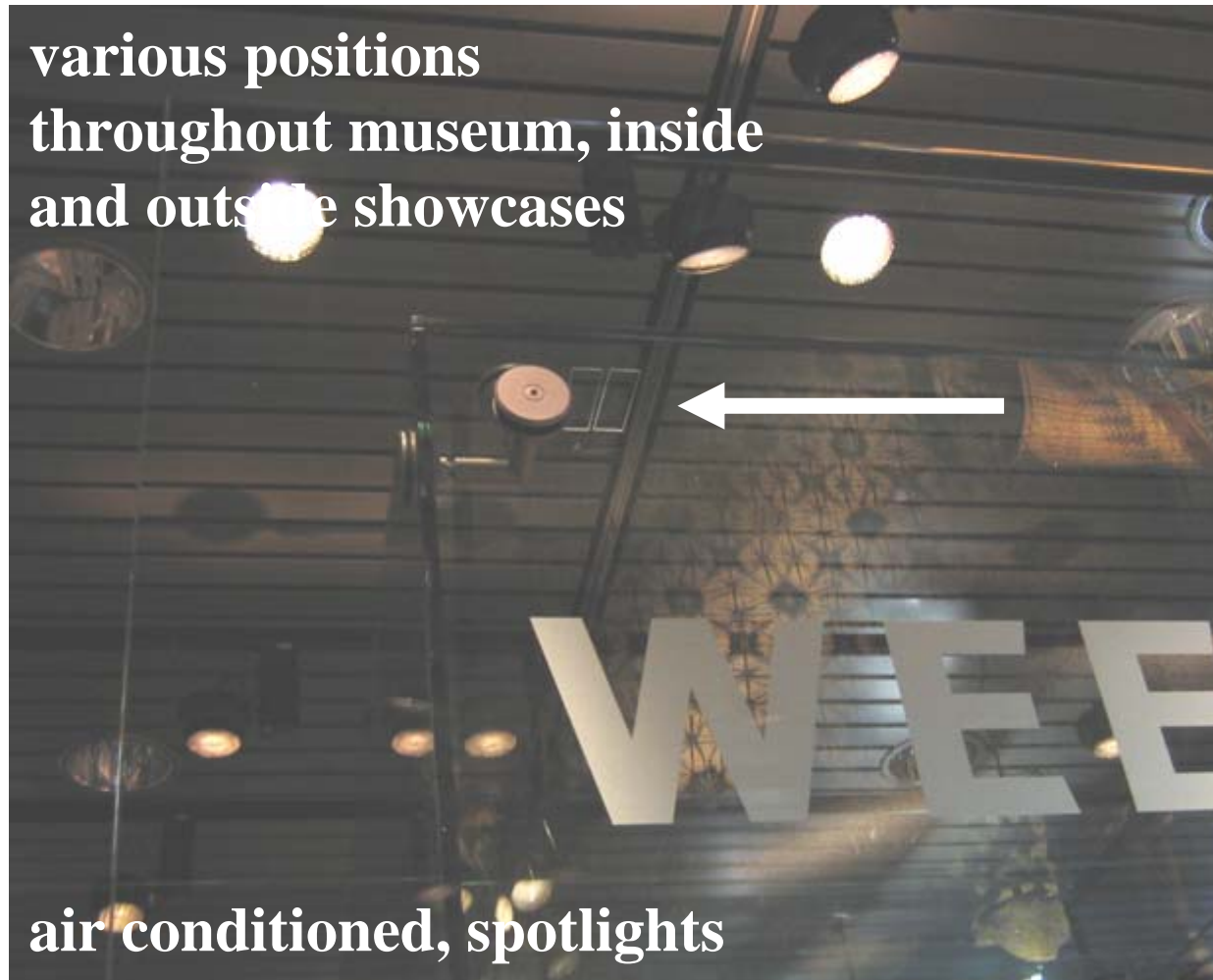


**5 positions, empty, no visitors,
air conditioned**



National Ethnographic Museum Leiden

various positions
throughout museum, inside
and outside showcases

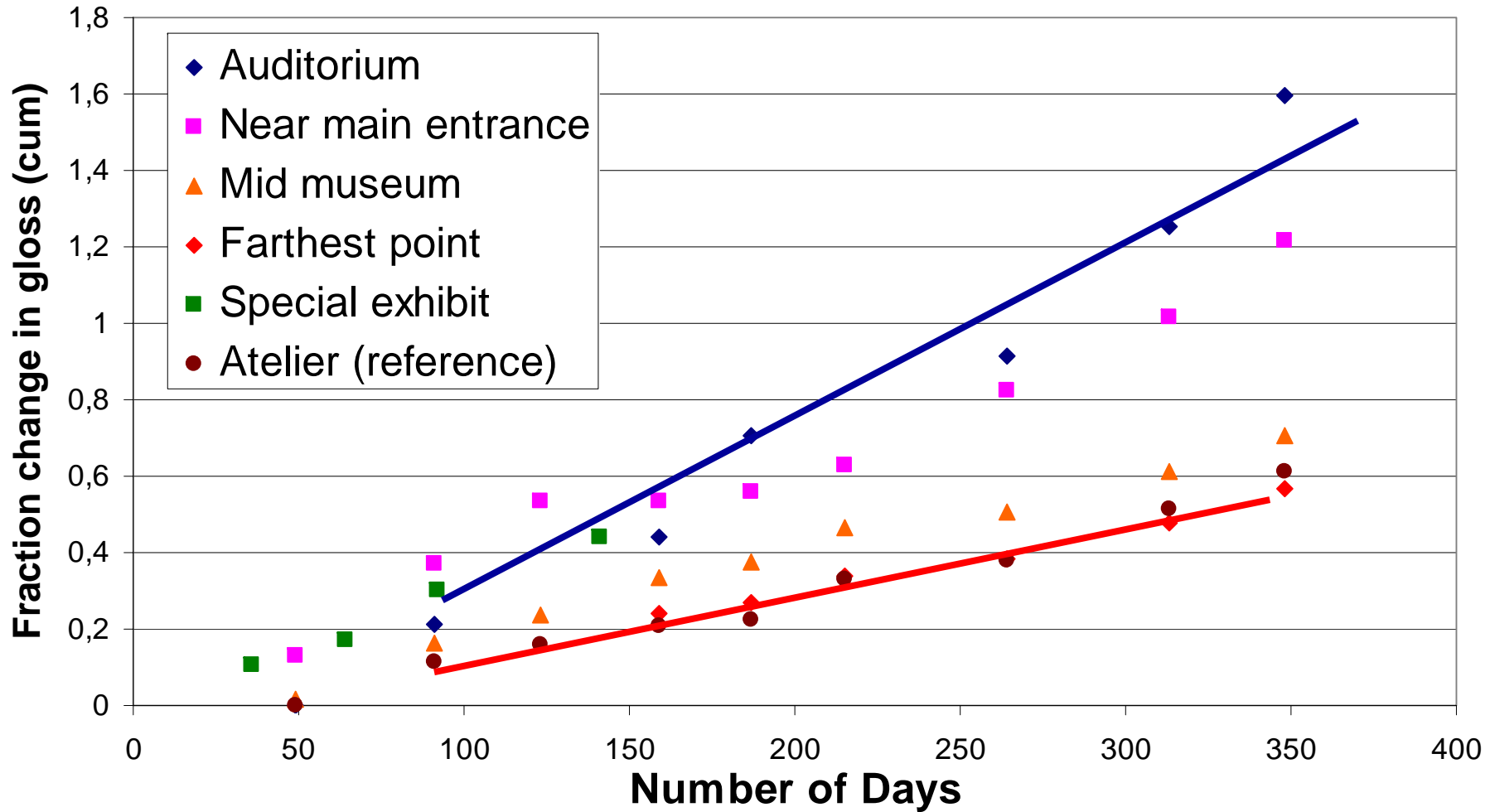


air conditioned, spotlights

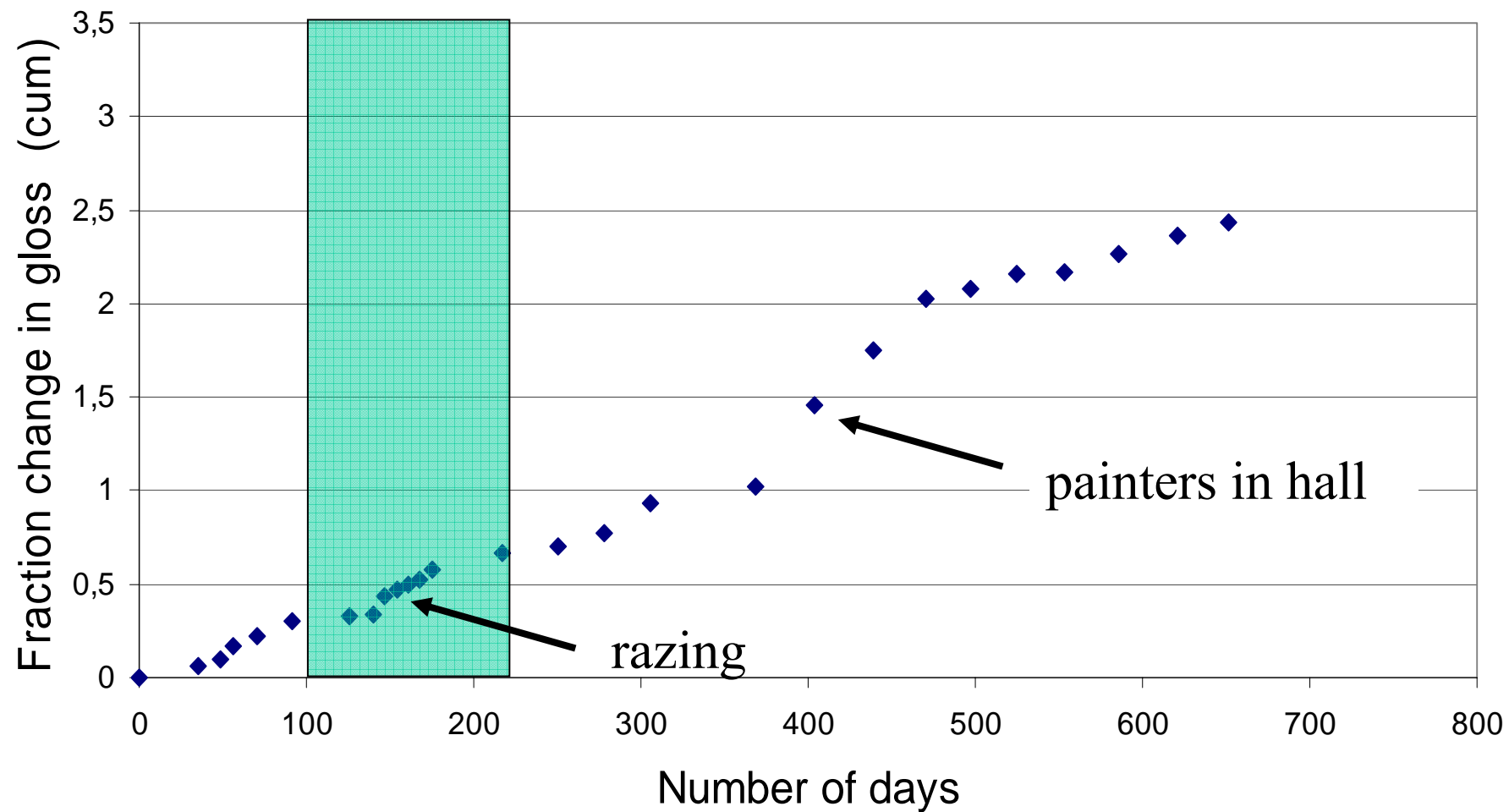
instituut
collectie
nederland



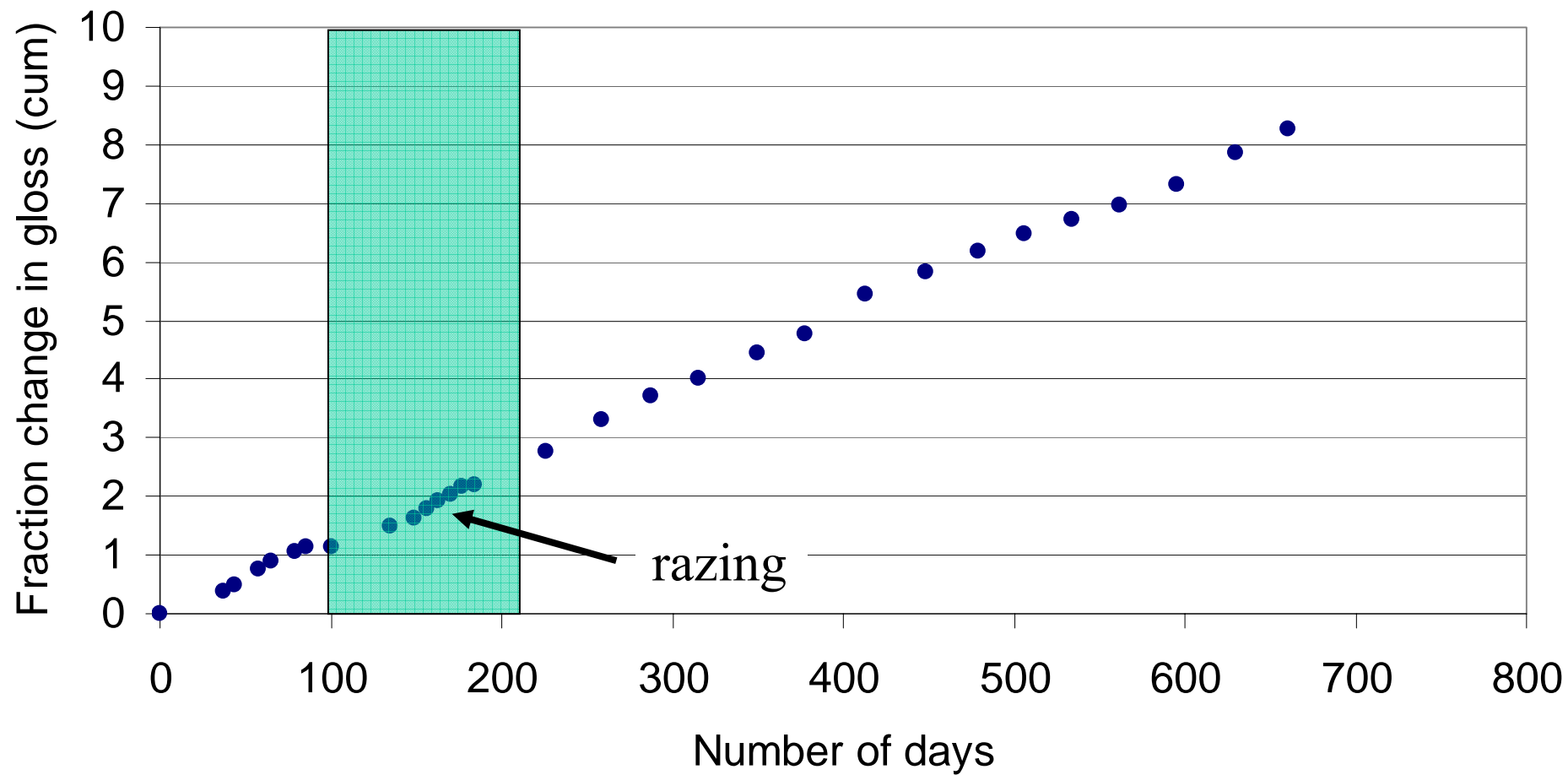
National Museum of Ethnography Leiden



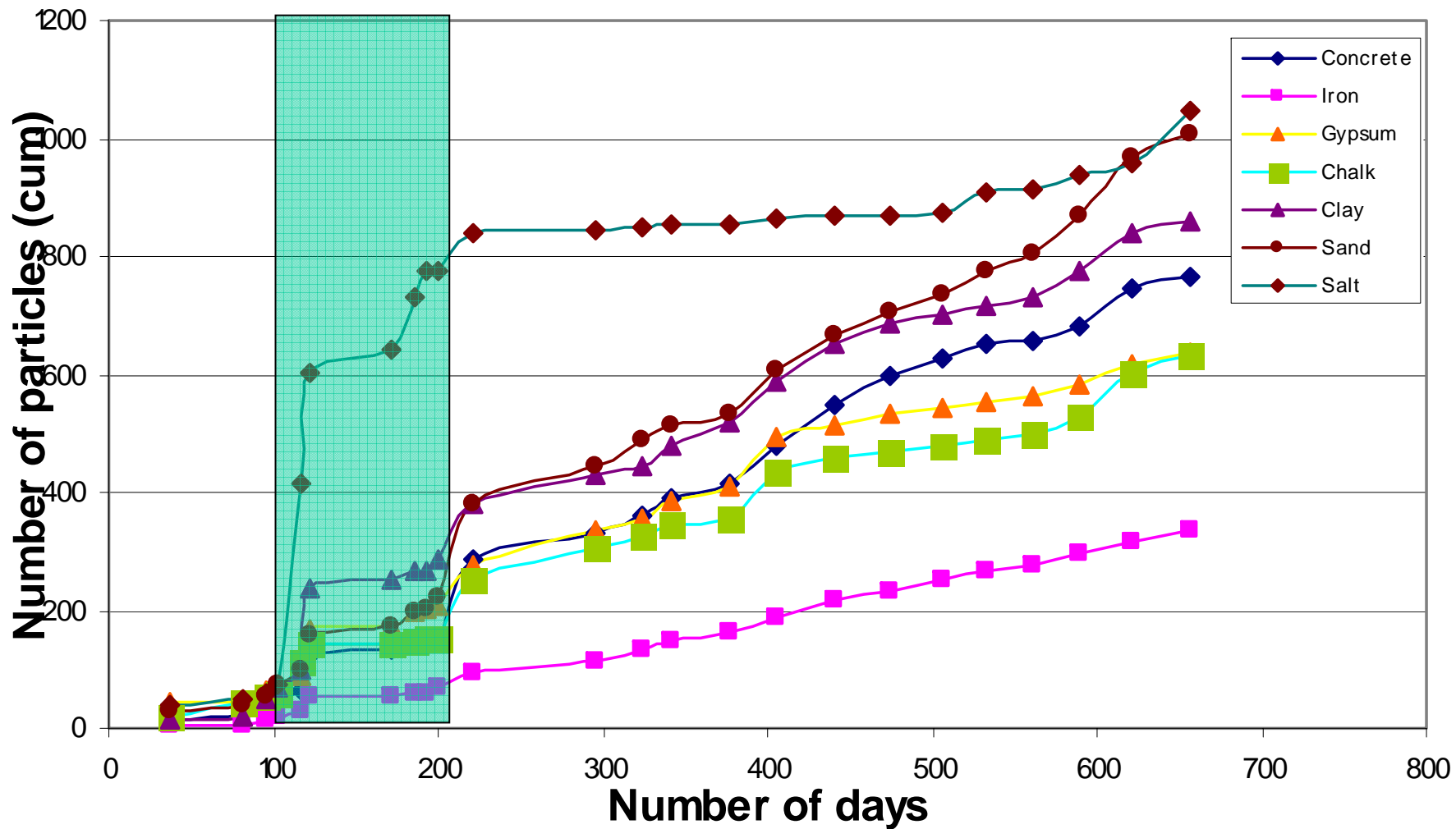
Willem V pos 1 85H



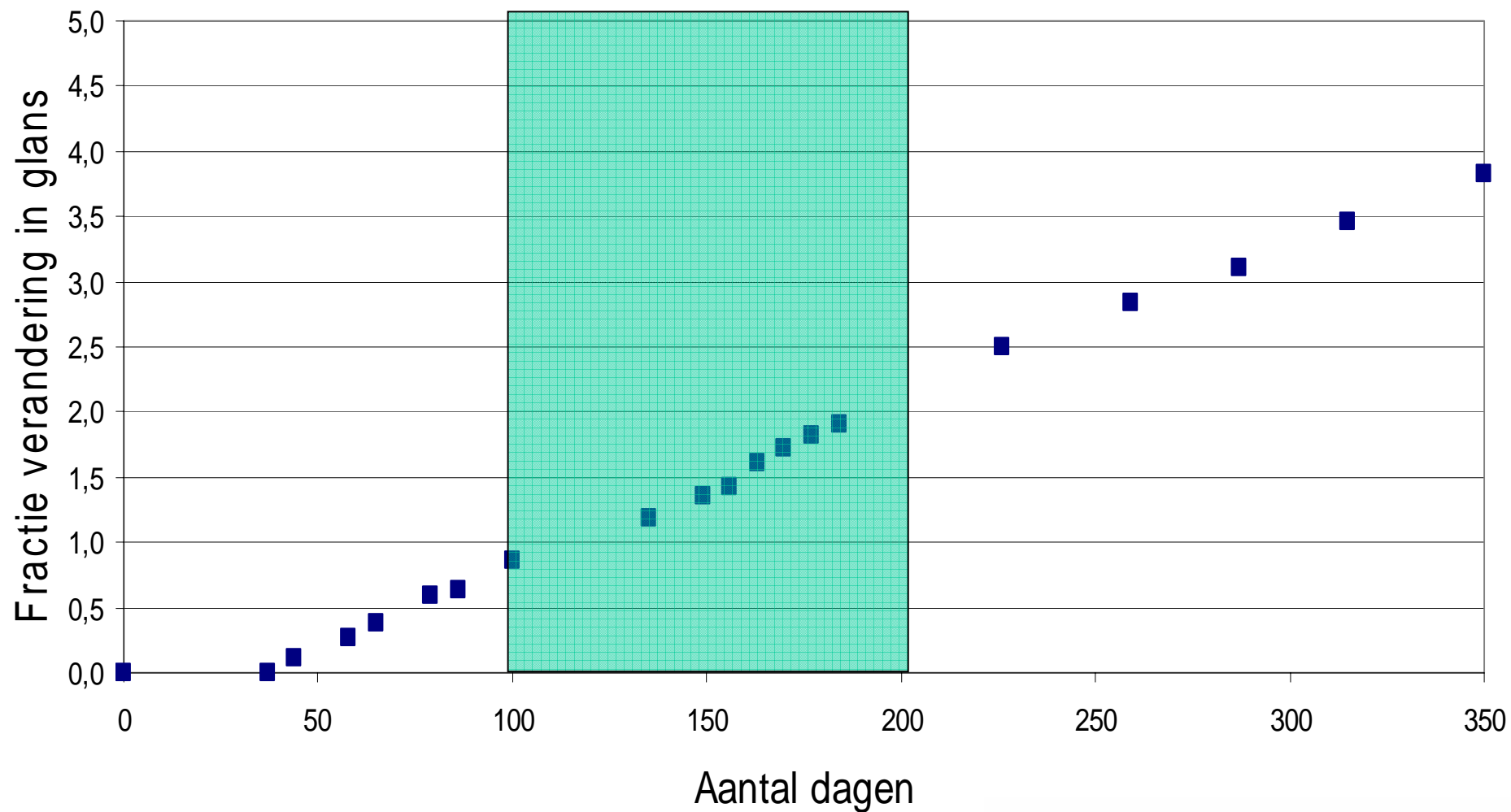
Gevangenpoort Pos 4 85H



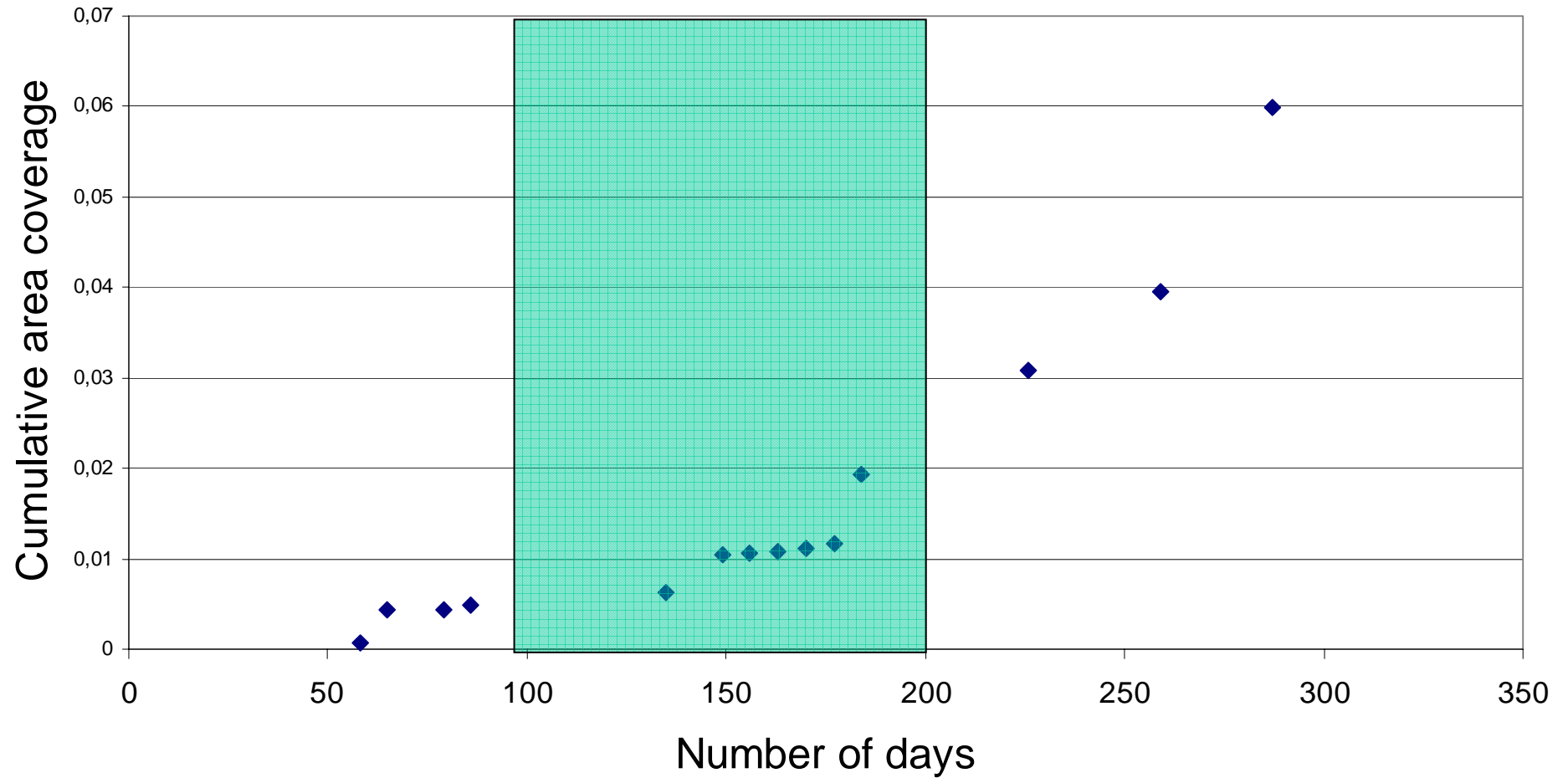
Gevangenpoort Pos. 4

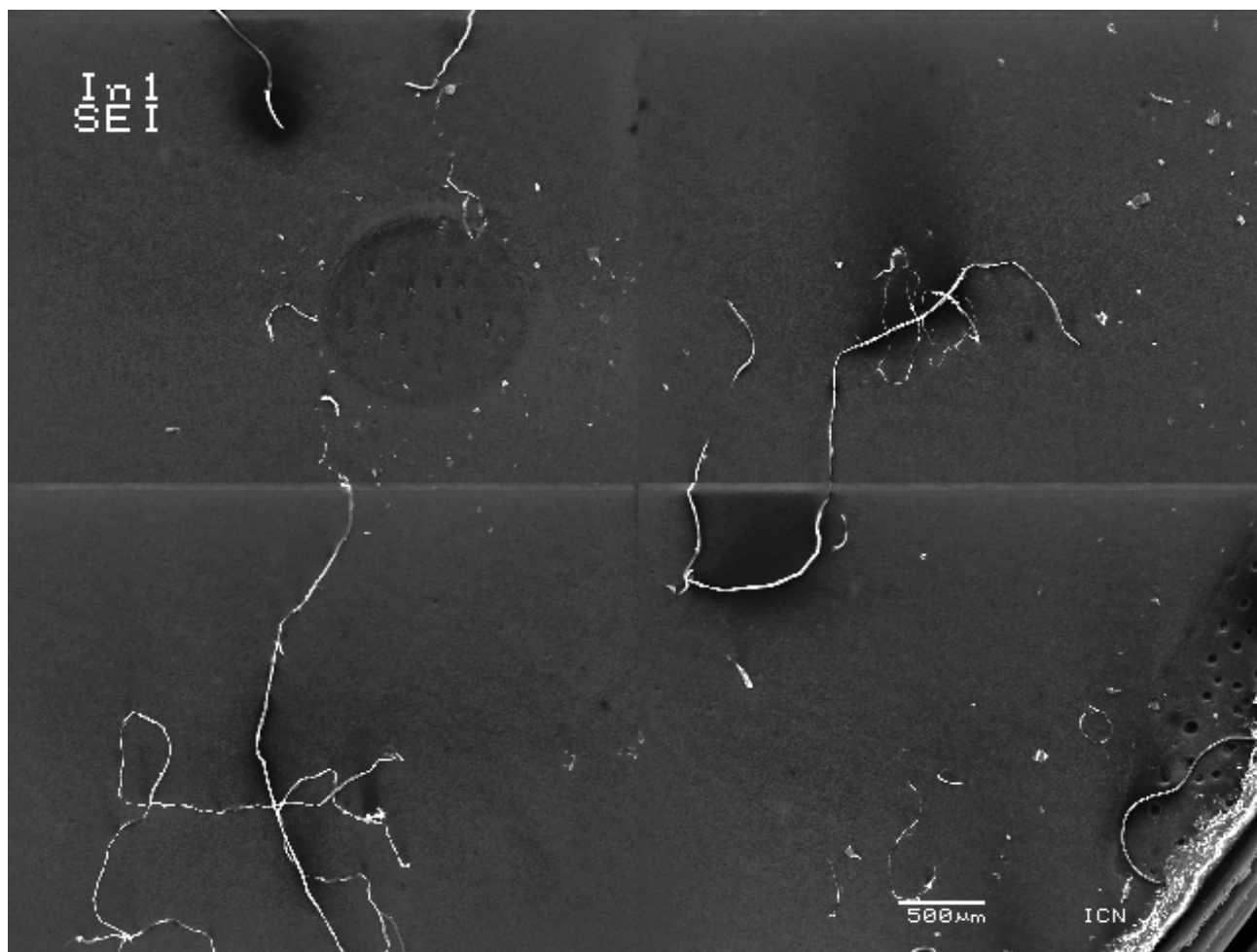


Gevangenpoort Pos 5 85H



Gevangenpoort Pos. 5





Some Preliminary Conclusions

- Gloss measurements appear to be useful as simple method for monitoring dust collection rates
- Air conditioned museum: dust brought in by people (Leiden)
- Relationship between inside and outside (Willem V)?
- Additional chemical analyses required for “open-air” museums / “aggressive” situations (Gevangenpoort, Willem V)

What is “too much dust”?

- Definition of “too much dust” is subjective and is **NOT DIRECTLY** measurable
- Relate subjective definition to measurable quantity (e.g. rate of accumulation to given amount)
- 3% loss of gloss in historic house (textiles) = major cleaning
- 0,2% area coverage by dark particles on white background is “noticeable”
- 33% loss of gloss on gray metallic shelf = not visible until object was removed (Leiden)

Work to be done

- Direct relationship between rates of change in gloss and area coverage (simple monitoring)
- Indirect relationships between rates of change in gloss, area coverage, and chemistry
- Statistics