

Airborne particles in a large portrait collection

Jan Holmberg

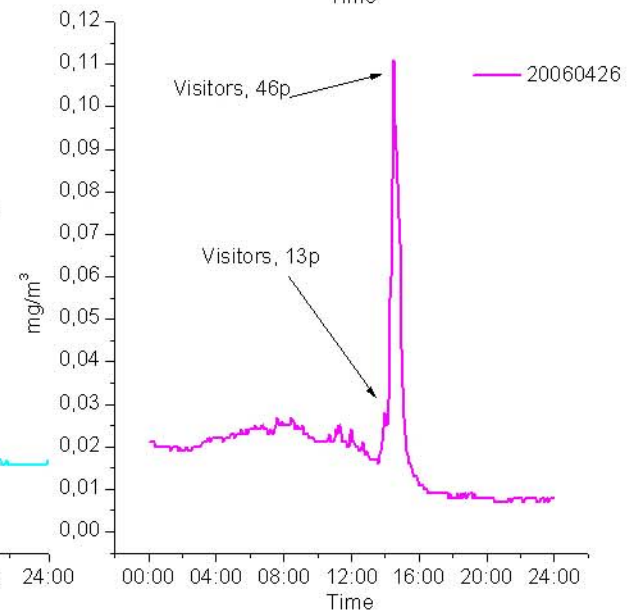
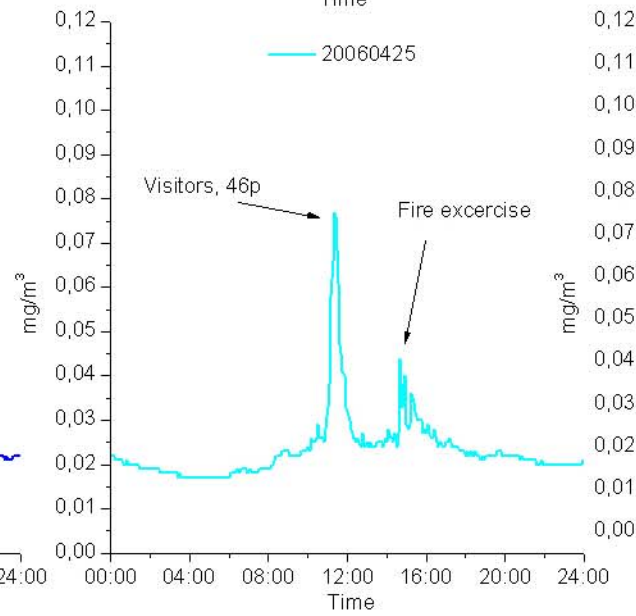
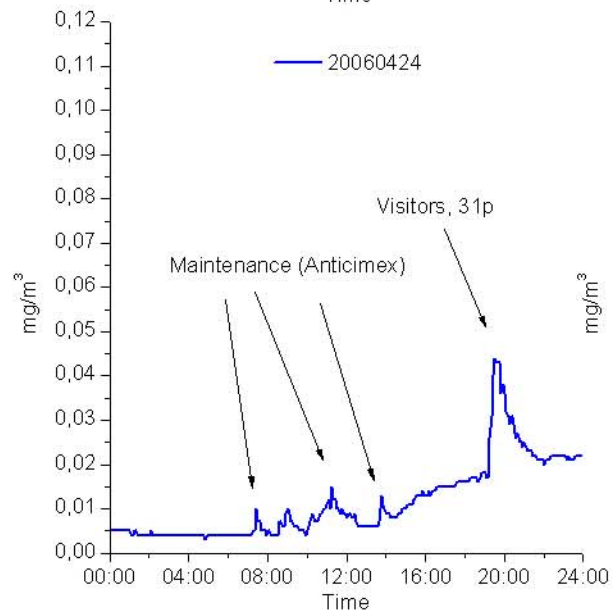
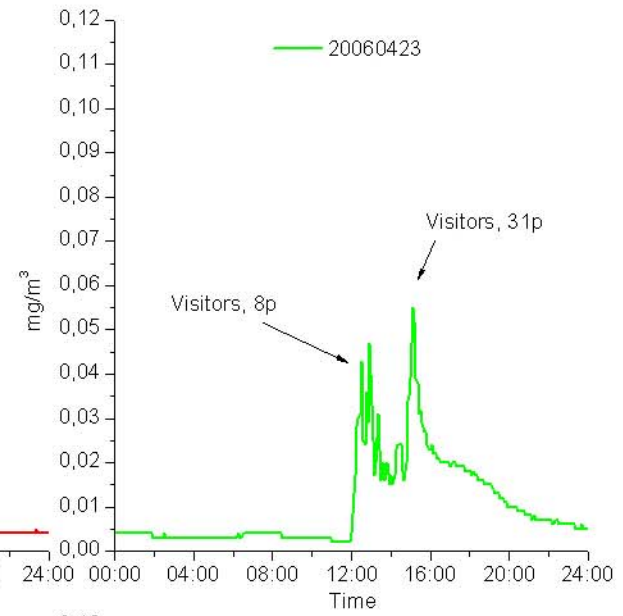
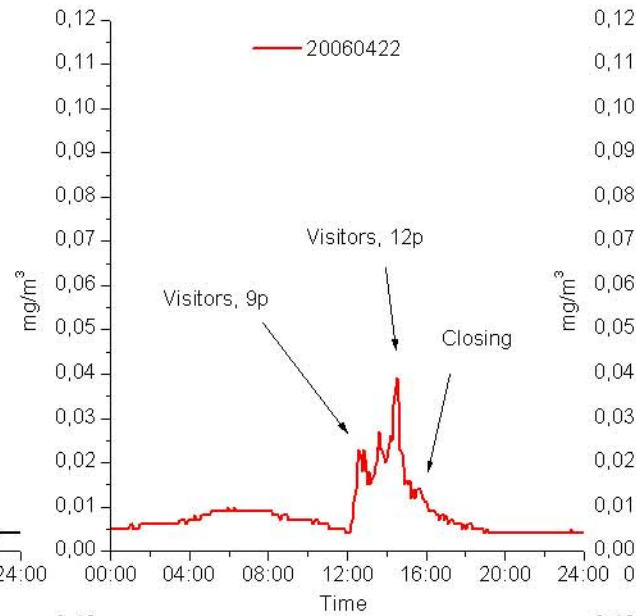
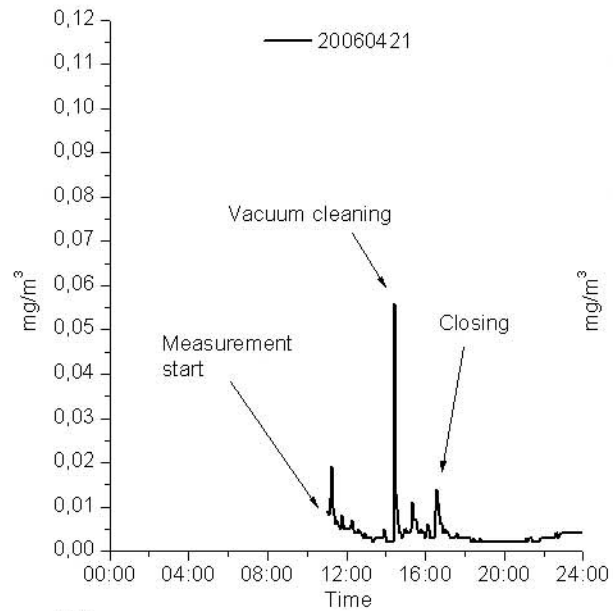
Lars Olander

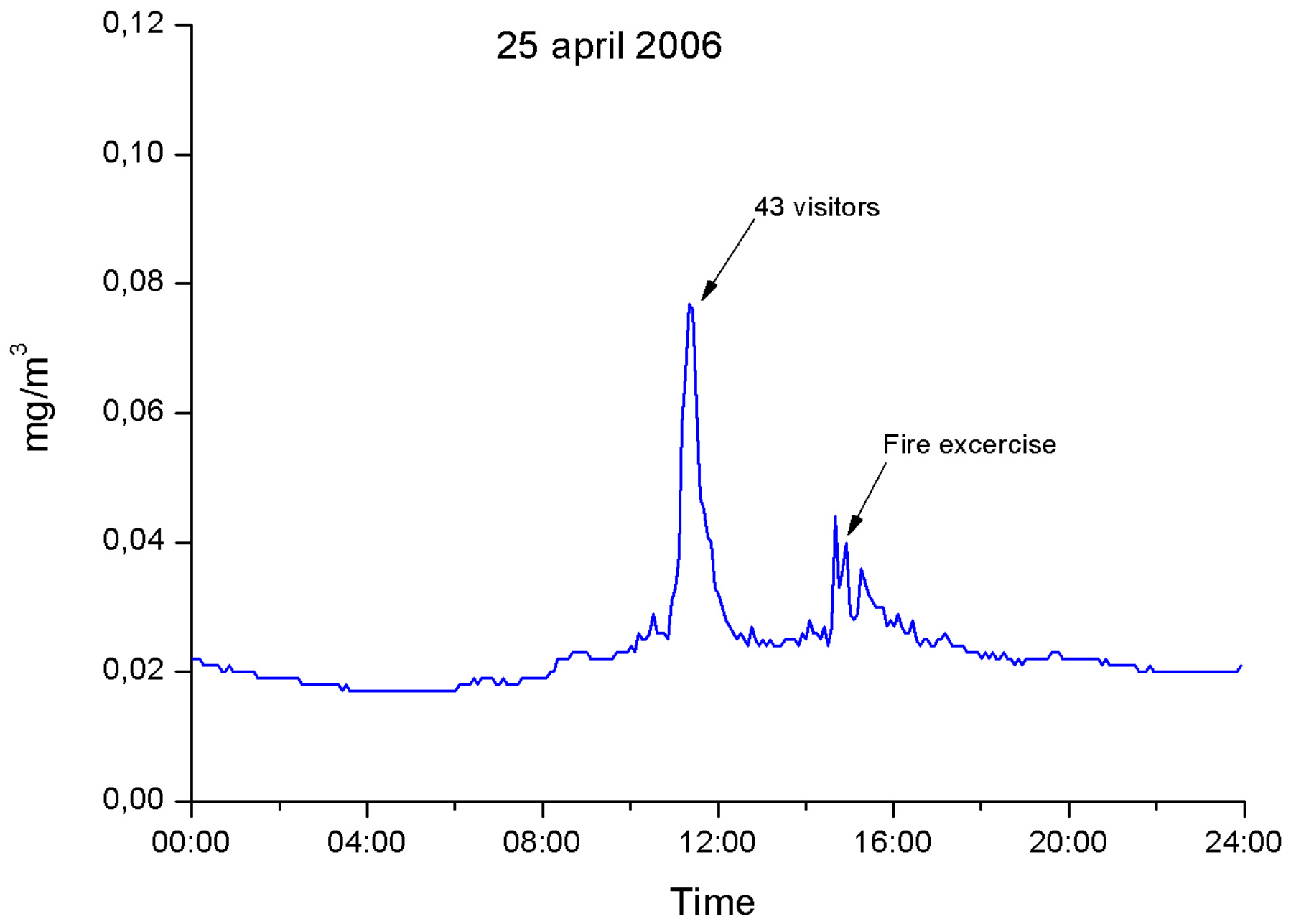
Building Services Engineering, Royal Institute of Technology (KTH),
Brinellvägen 32, 100 44 Stockholm, Sweden

Measurement systems

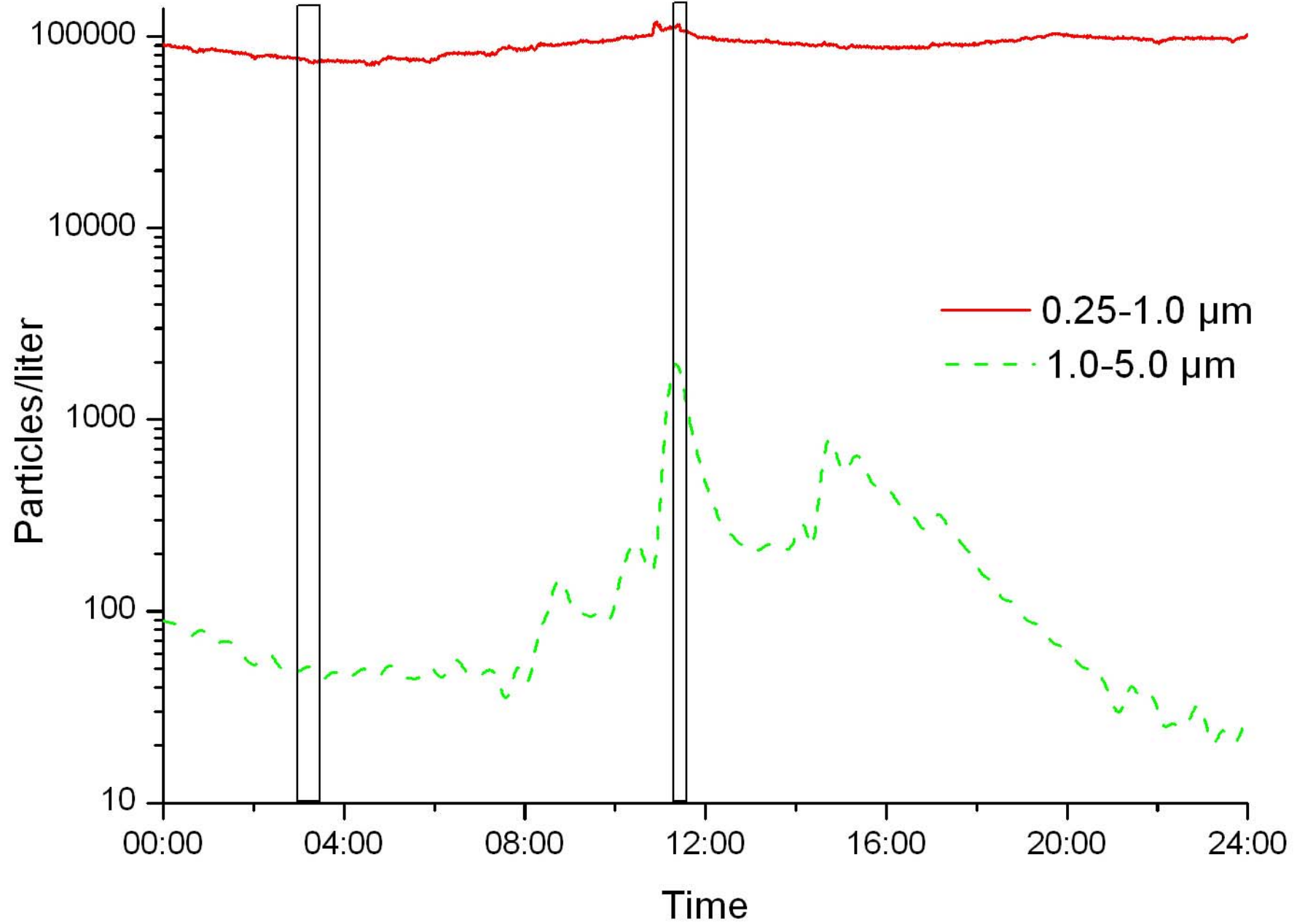
- DustTrak (TSI),
airborne particles $< 10 \mu\text{m}$ (mg/m^3)
- Aerosol Spectrometer 1.109 (Grimm),
airborne particles $0.25\text{-}32 \mu\text{m}$ in 31 size
intervals (particles/liter)

DustTrak 21/4-26/4 2006

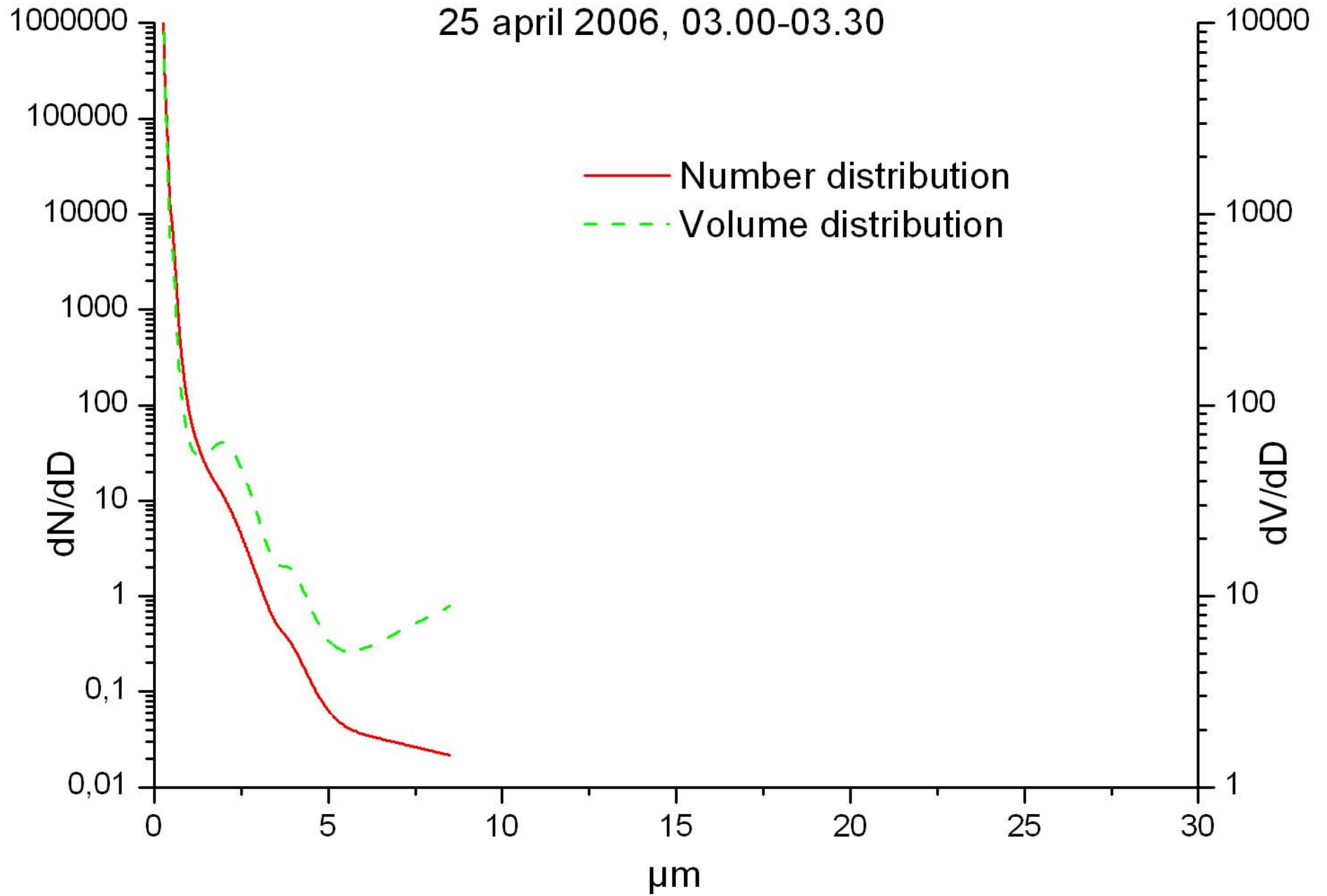




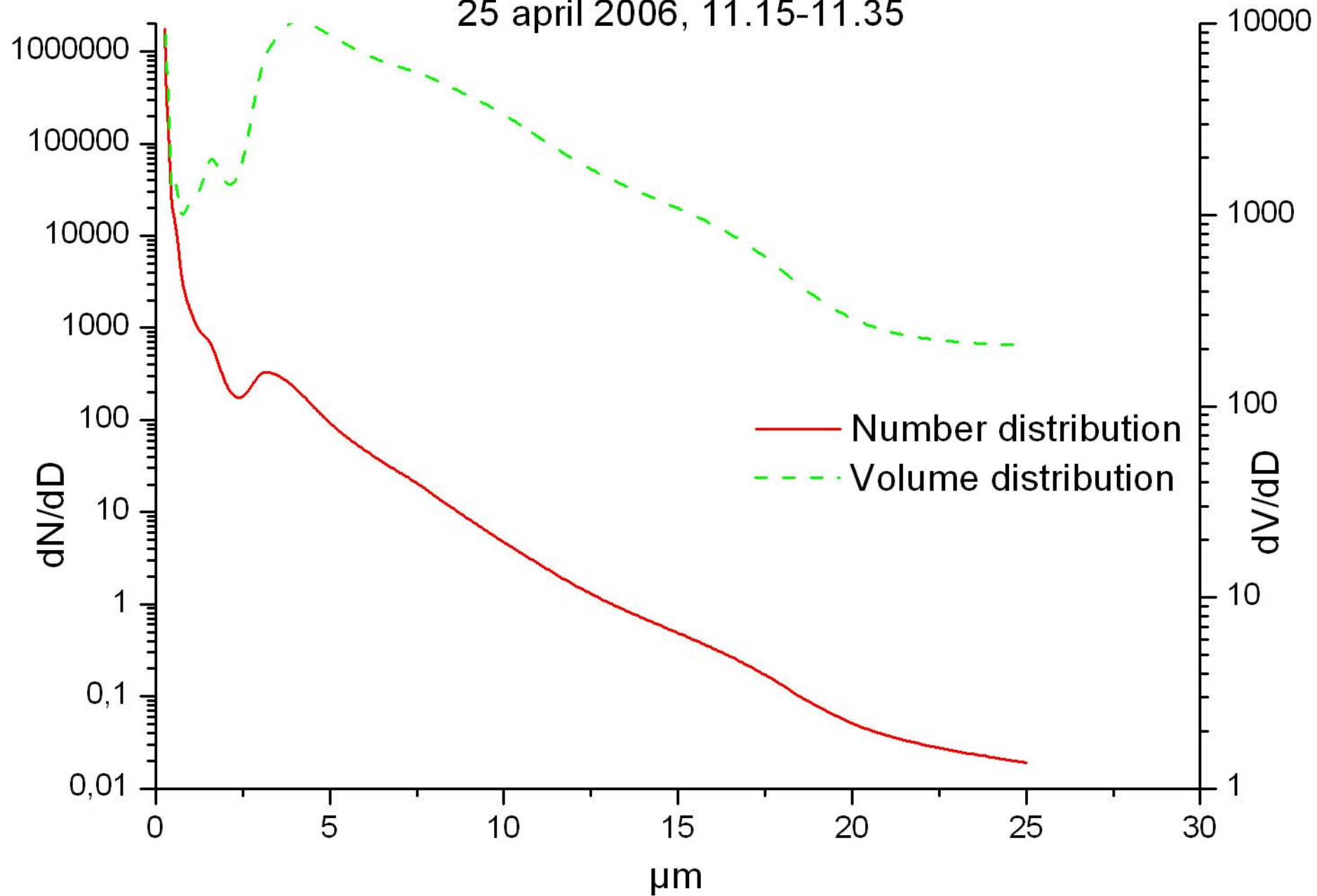
25 april 2006



25 april 2006, 03.00-03.30

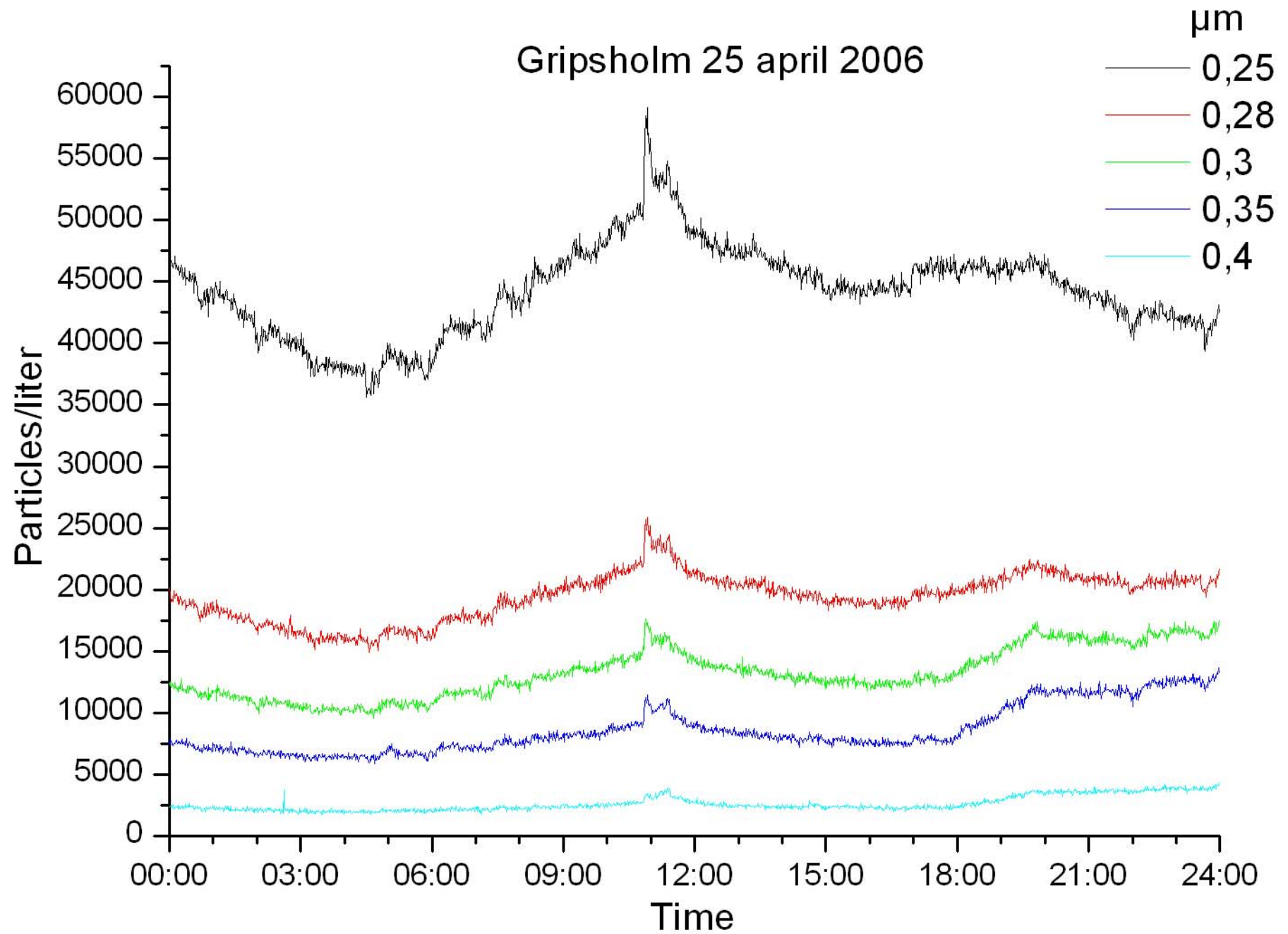


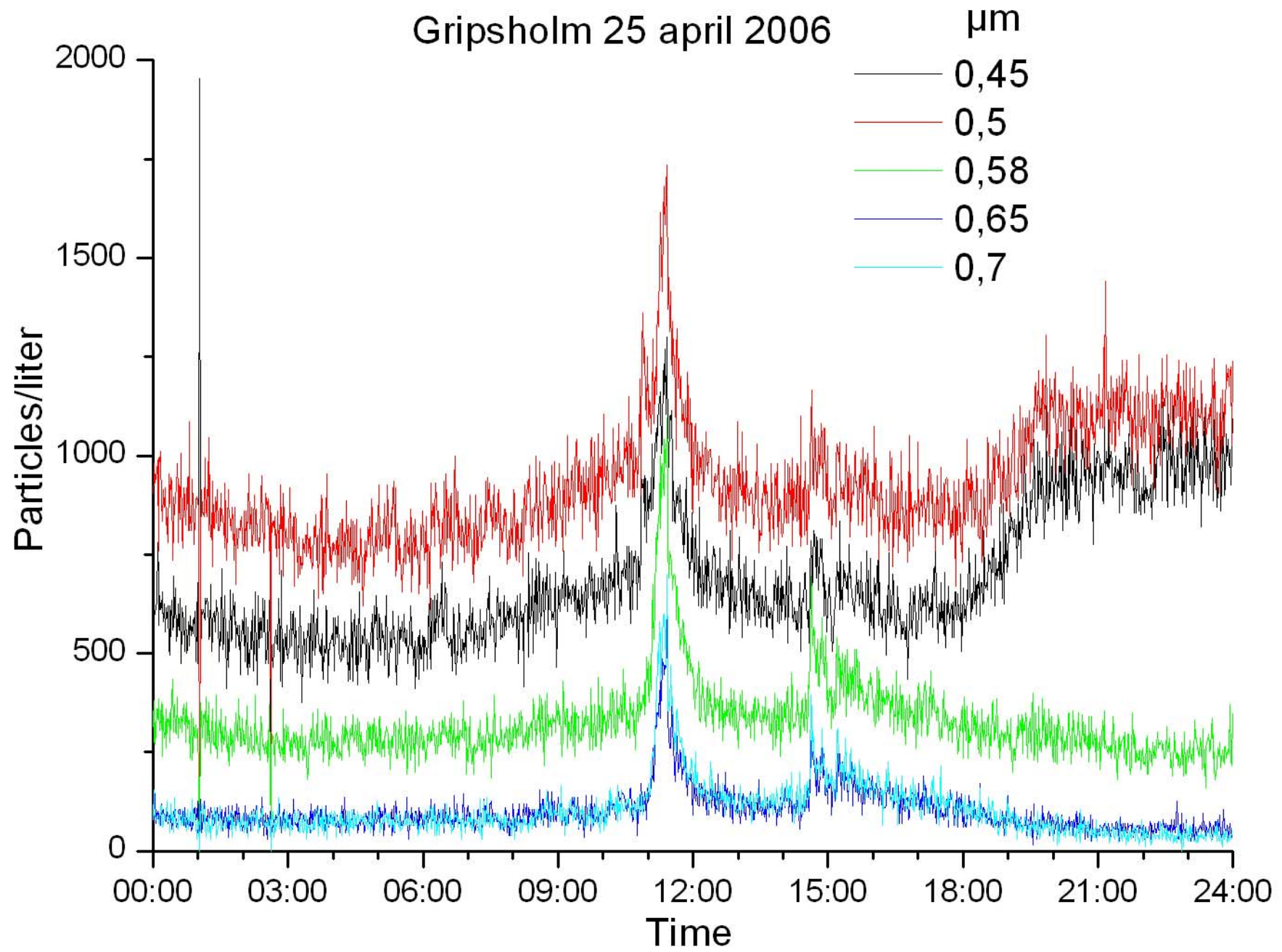
25 april 2006, 11.15-11.35



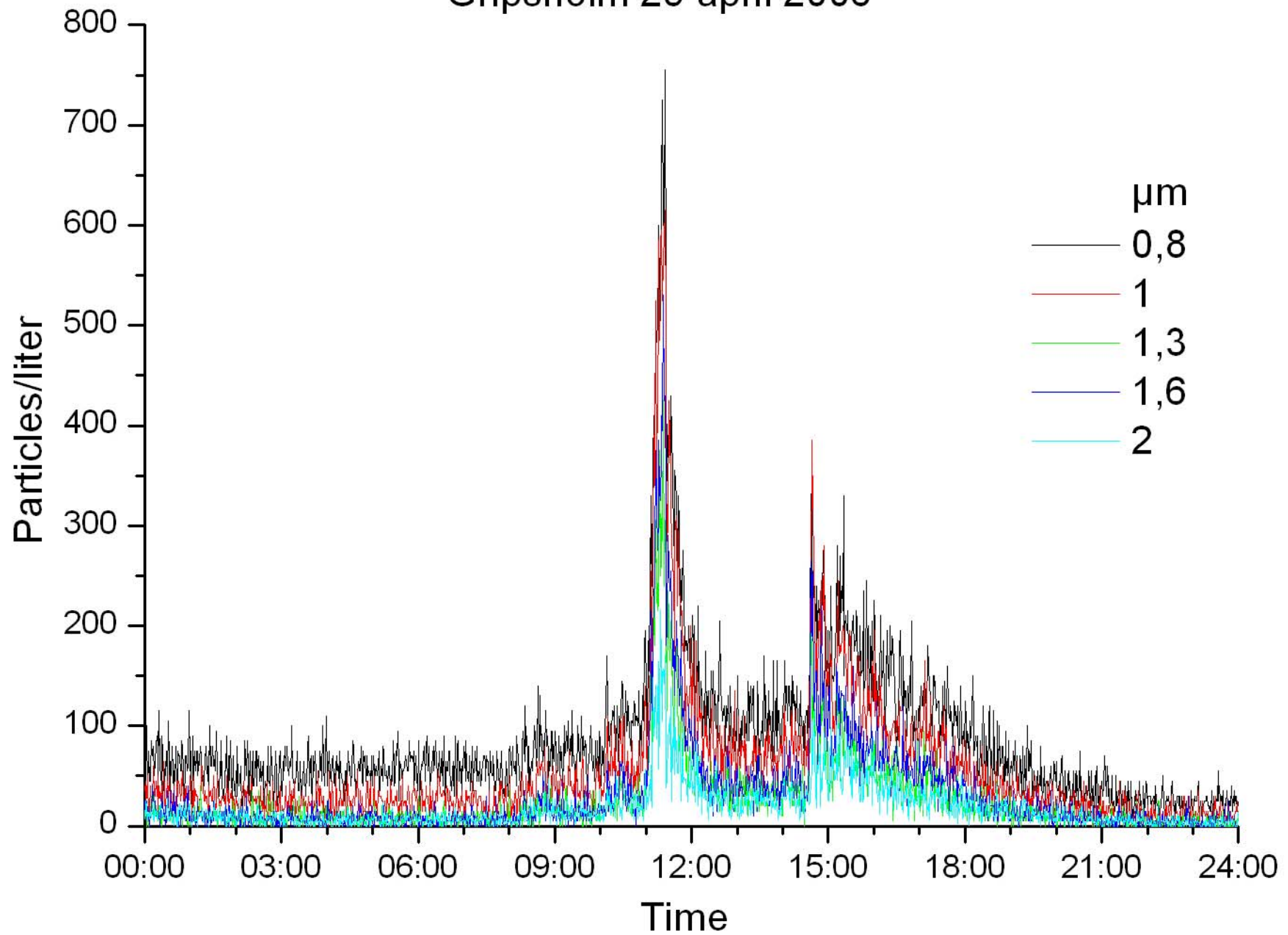


Thank you!

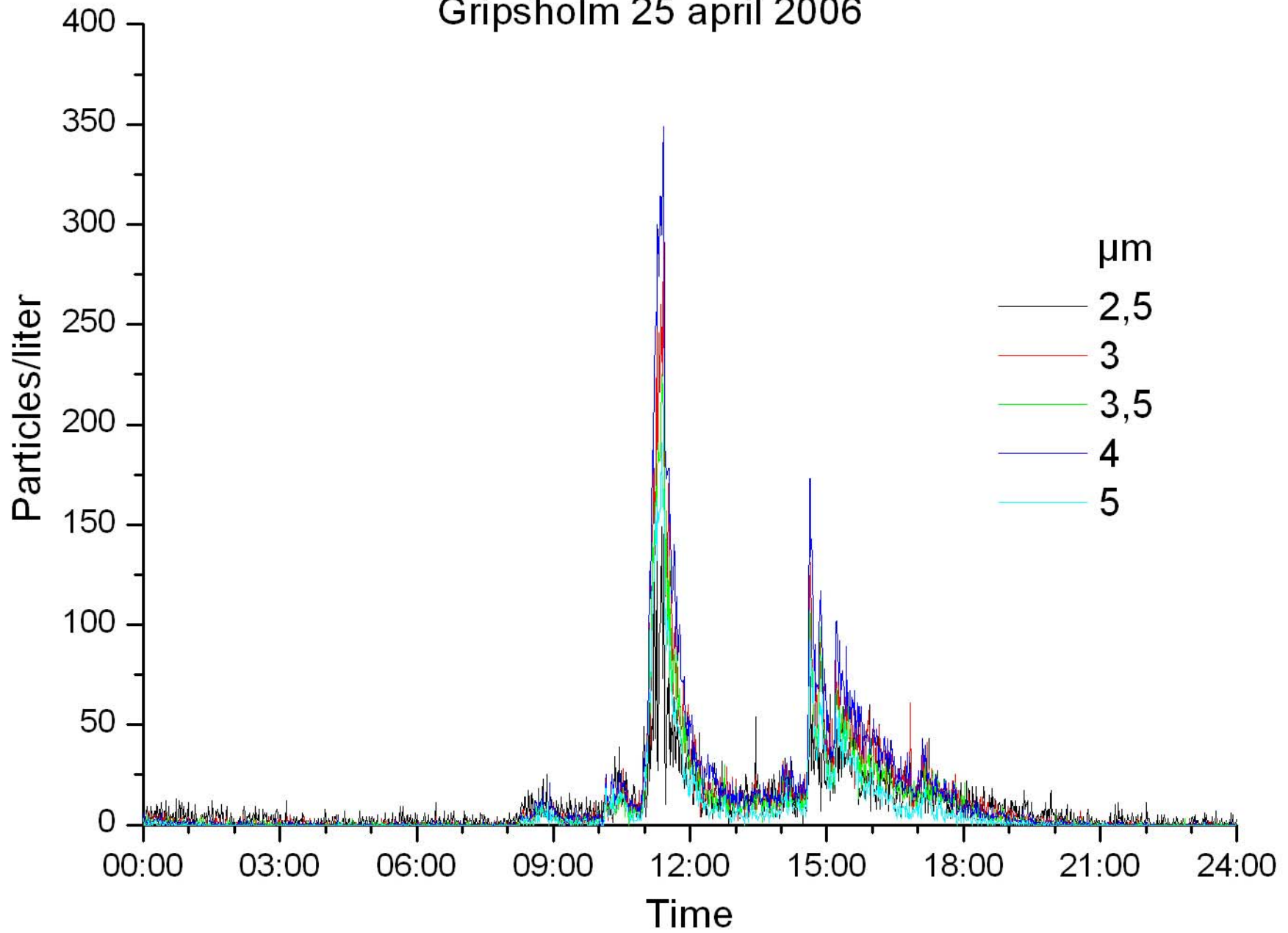




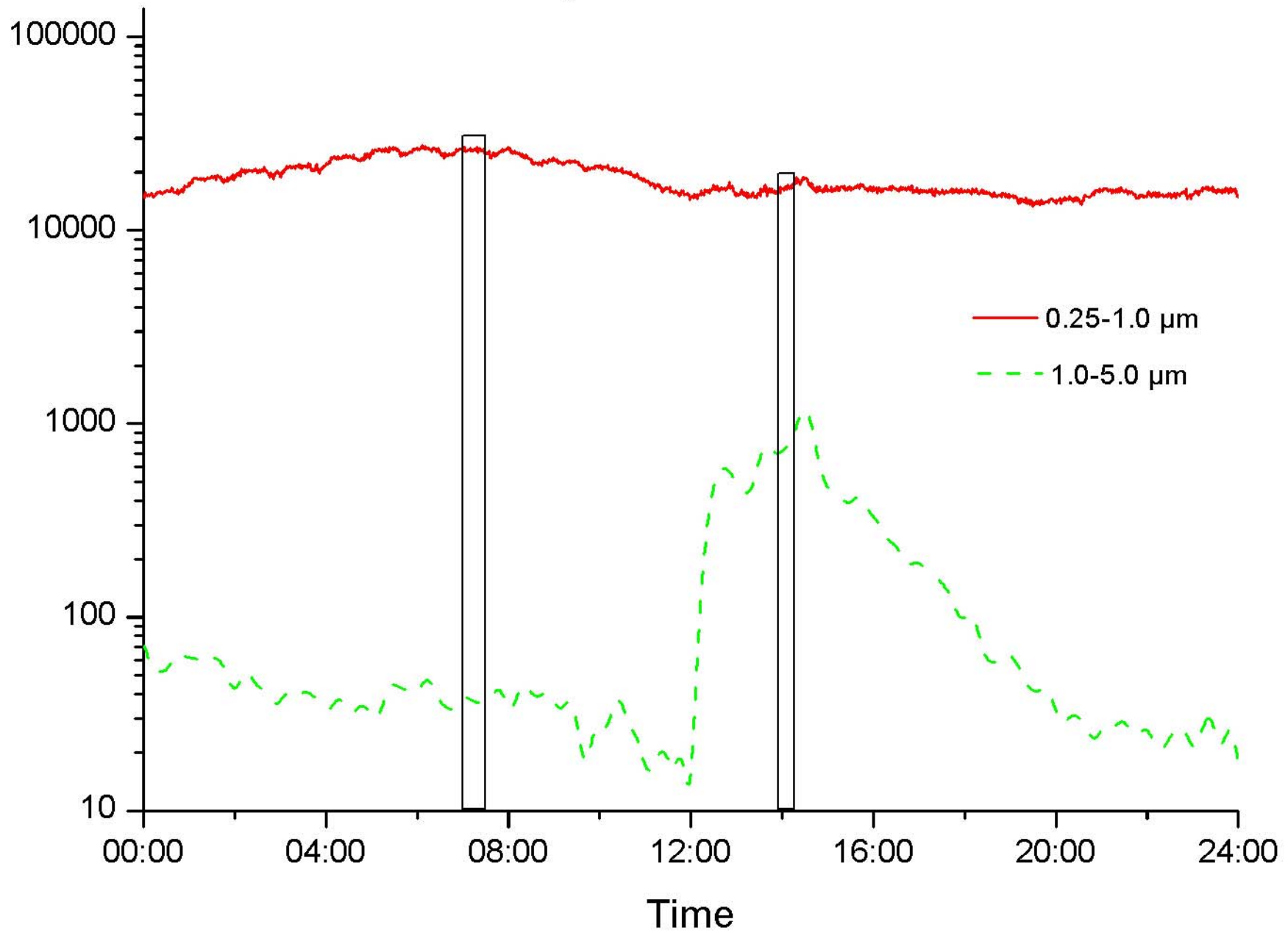
Gripsholm 25 april 2006



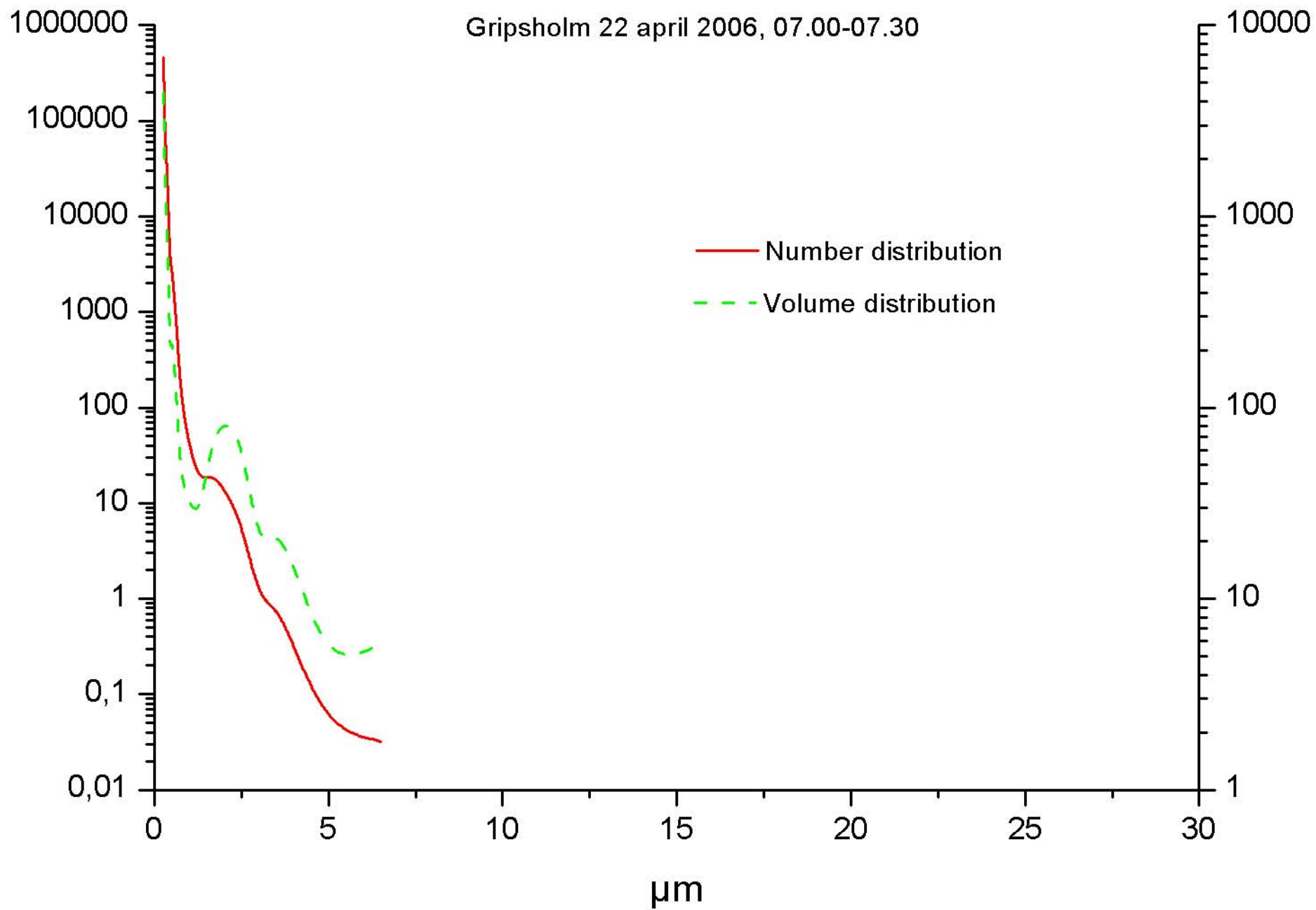
Gripsholm 25 april 2006

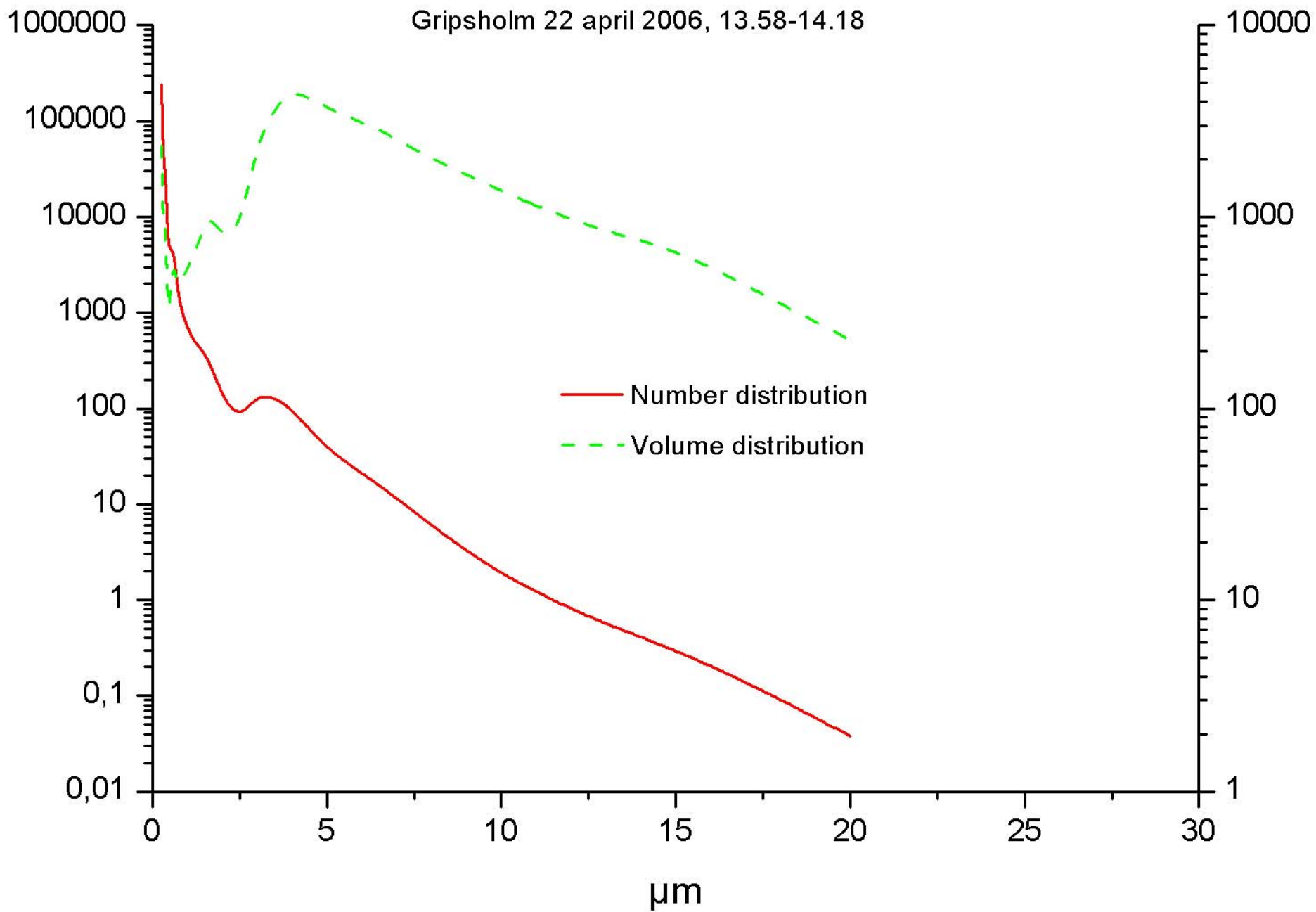


22 april 2006

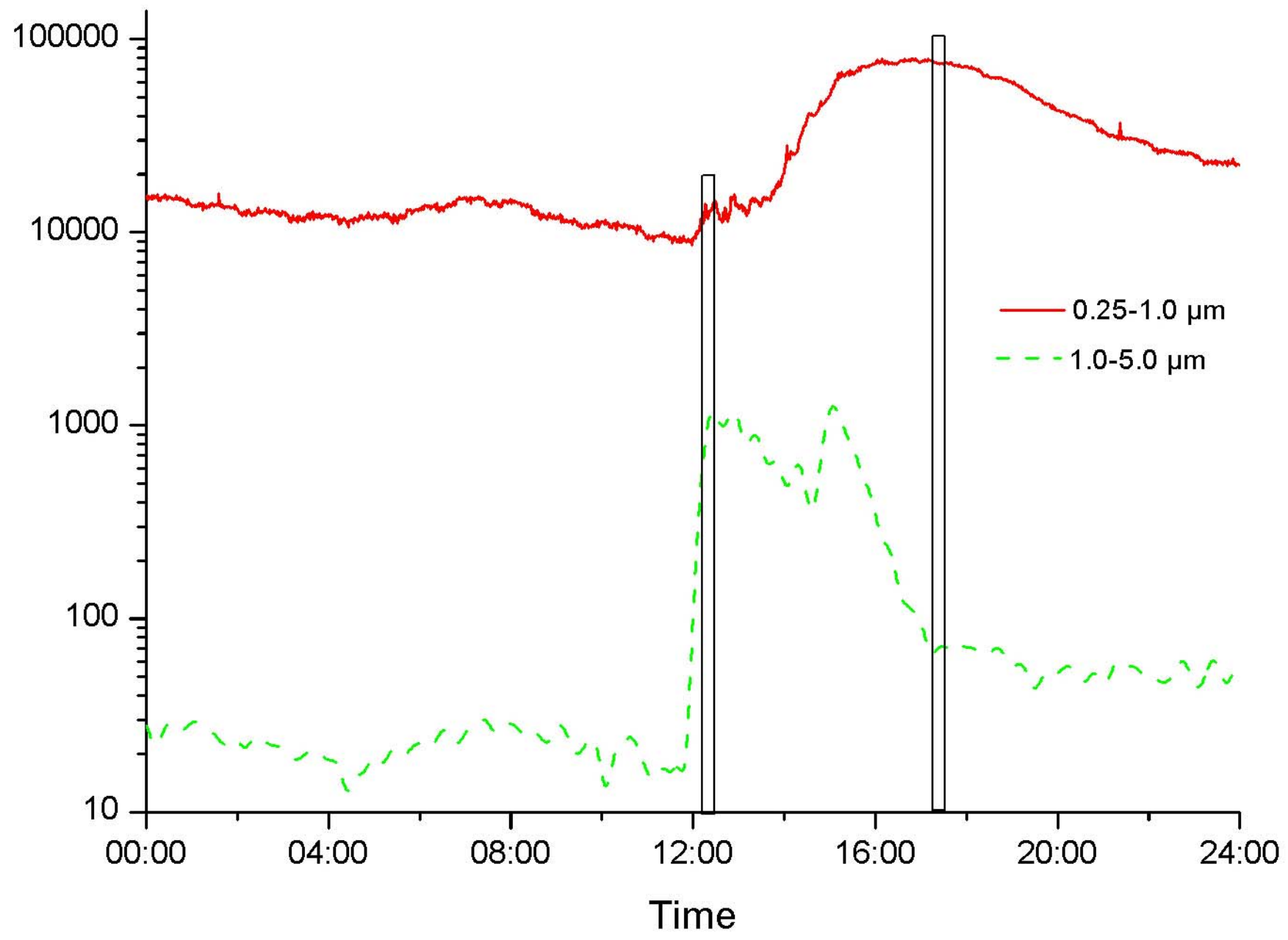


Gripsholm 22 april 2006, 07.00-07.30

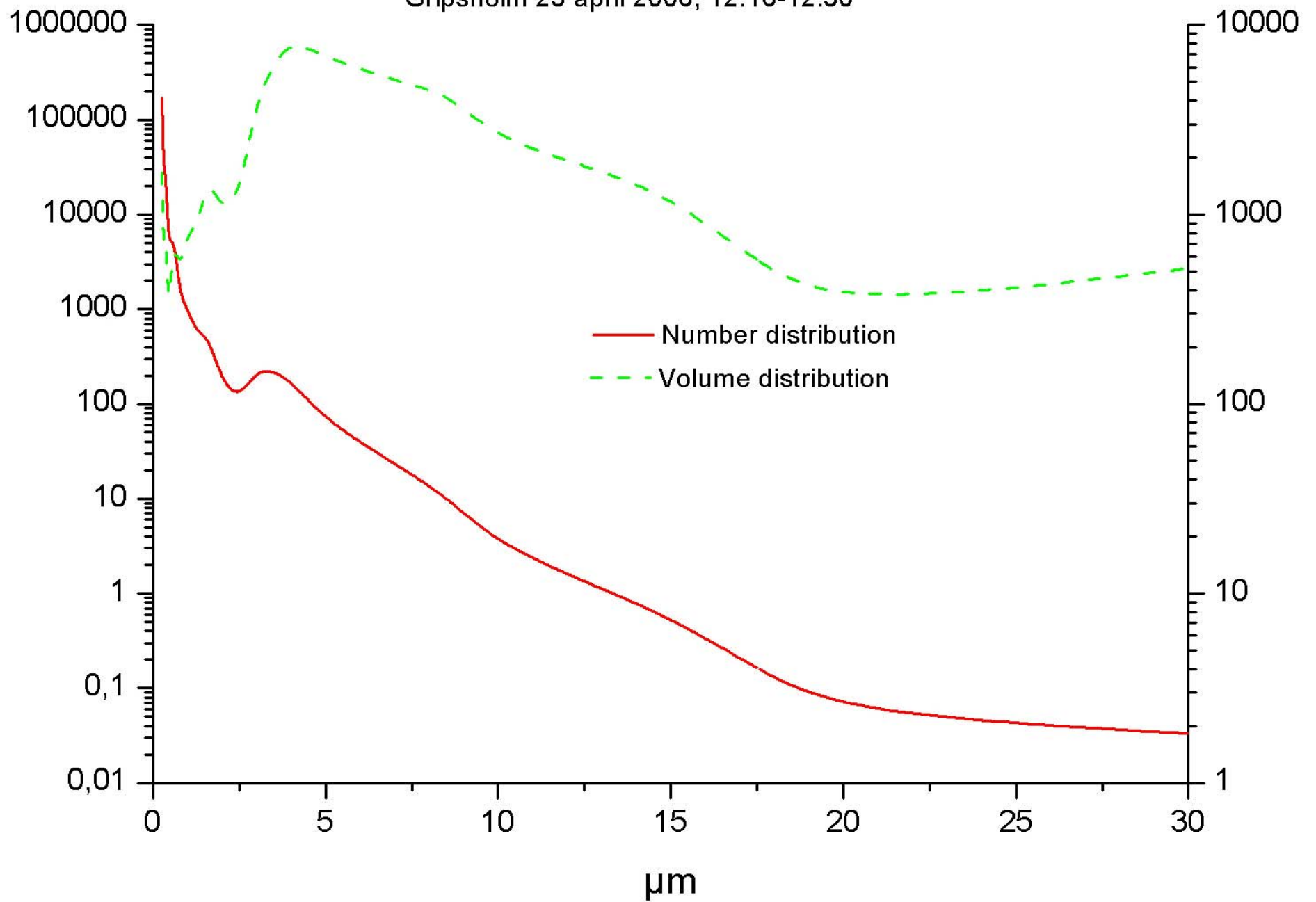




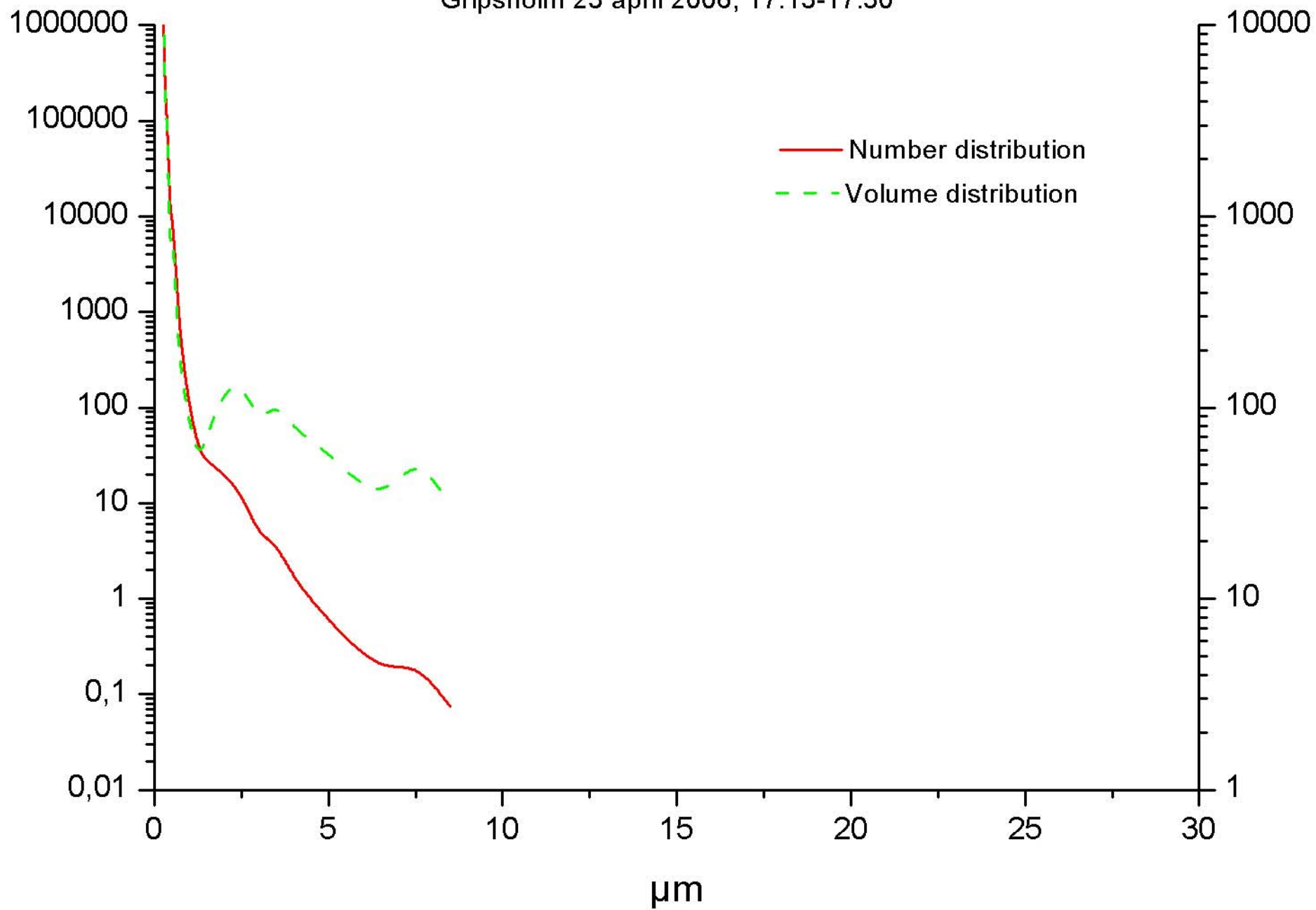
23 april 2006



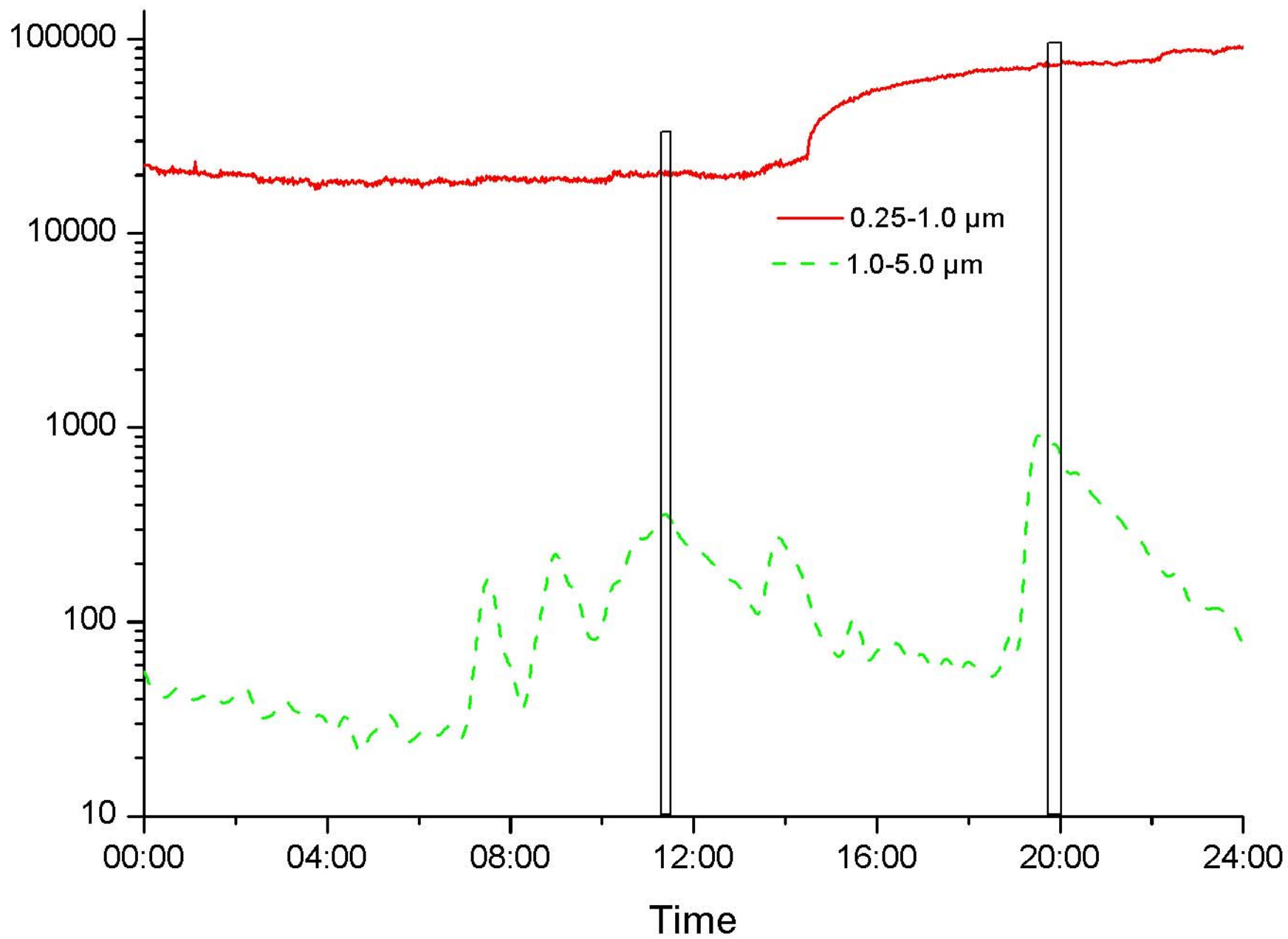
Gripsholm 23 april 2006, 12.16-12.30



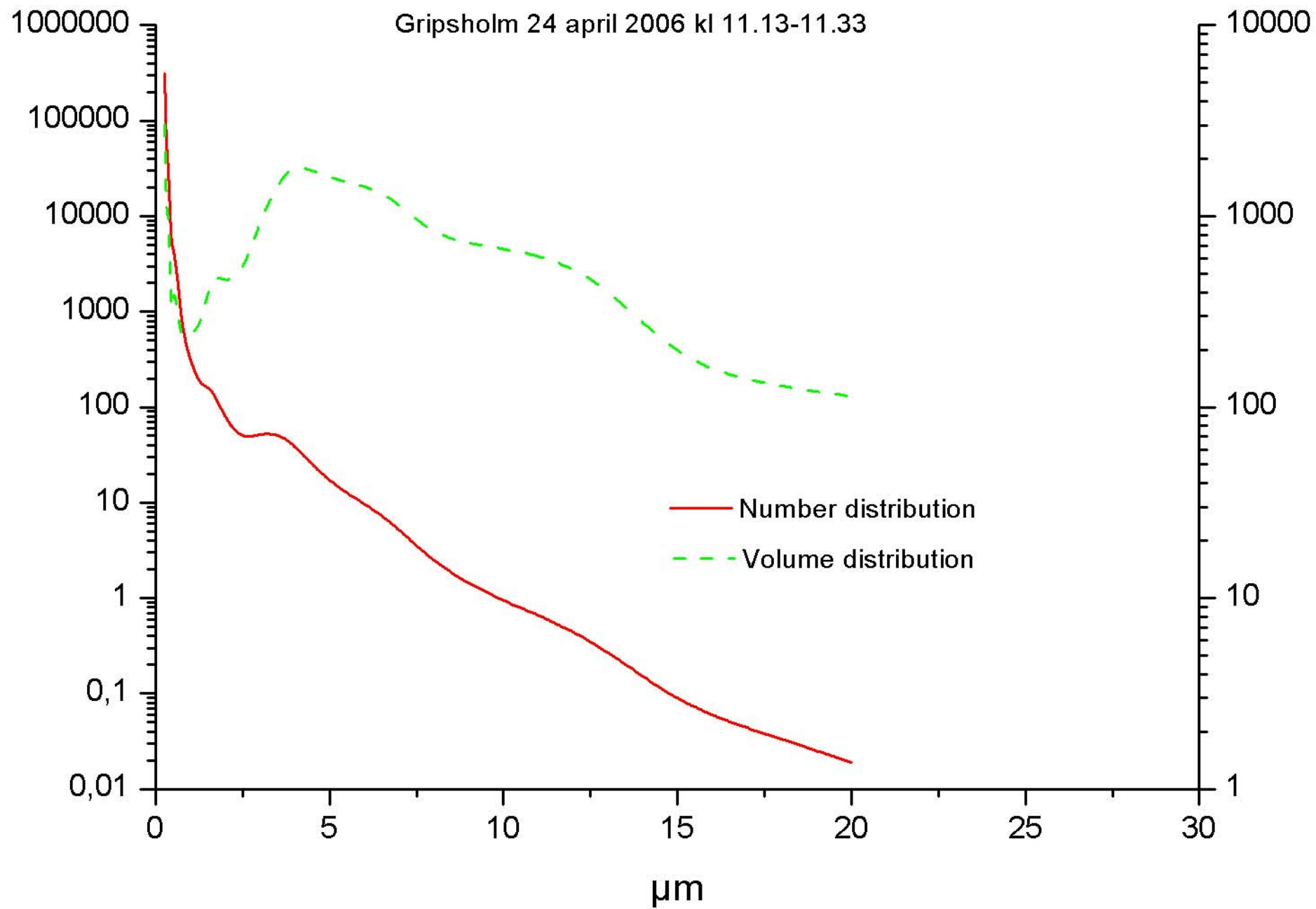
Gripsholm 23 april 2006, 17.13-17.30

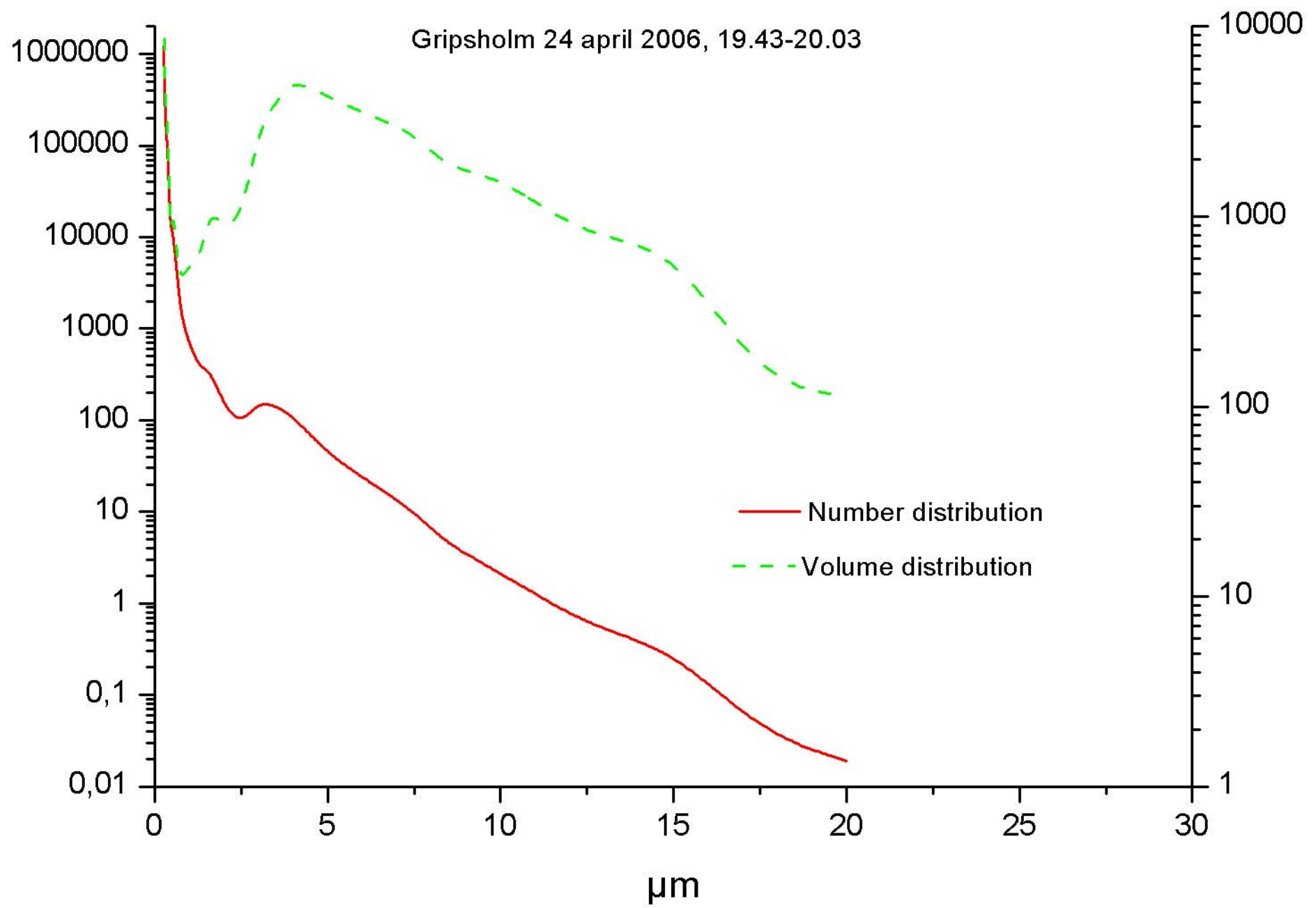


24 april 2006

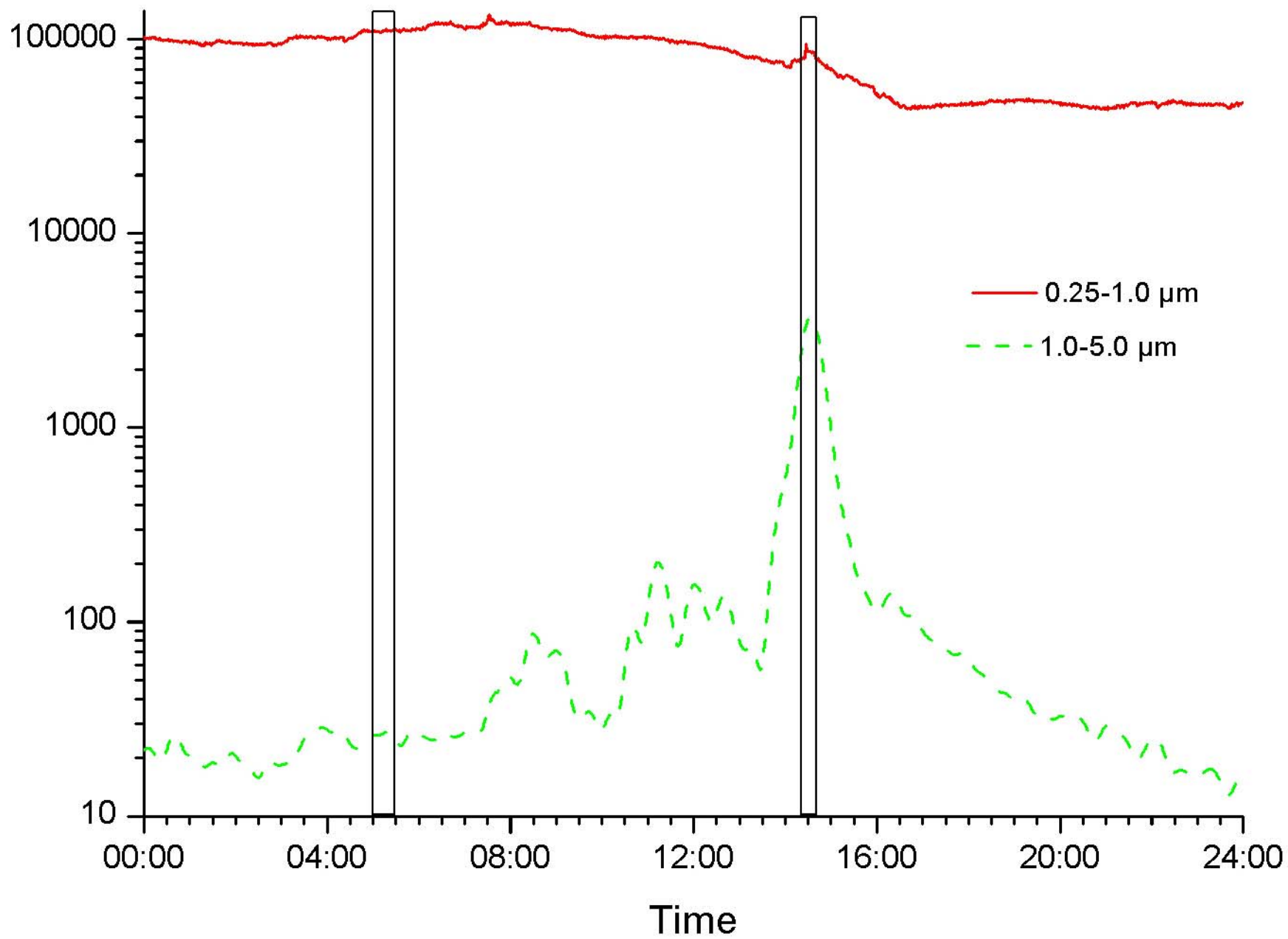


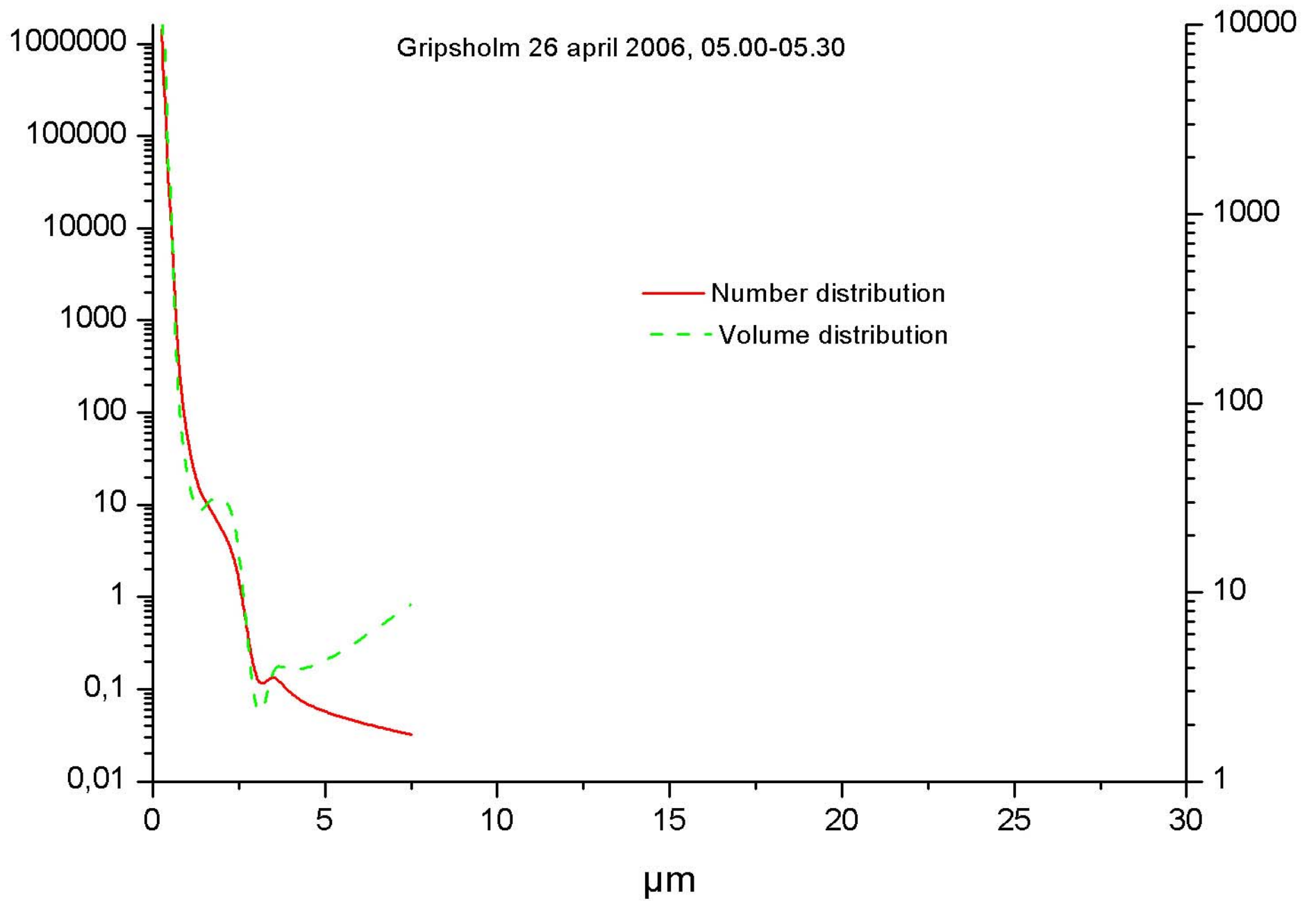
Gripsholm 24 april 2006 kl 11.13-11.33





26 april 2006





Gripsholm 26 april 2006, 14.26-14.40

