

CENTRE DE
RECHERCHE
ET DE
RESTAURATION
DES MUSÉES
DE FRANCE



IAQ in museums
and archives

The conservation of silver & the textiles of the showcases

Michel Dubus, Anne-Solenn Le-Hô (C2RMF) & Christophe Moulherat (CERTA)

Acknowledgements: Elisabeth Delahaye, Anne Dion (Louvre - DOA)

Hubert Beolet, Marie-Christine Dorothe (C2RMF)

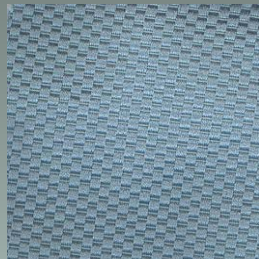
7th IAQ Braunschweig 15-16
November 2006



method



recognize potential hazard



silk?



velvet?



satin?



cotton?

felt?

wool?

cross section
2 triangular fibers
soldered together

20 μm

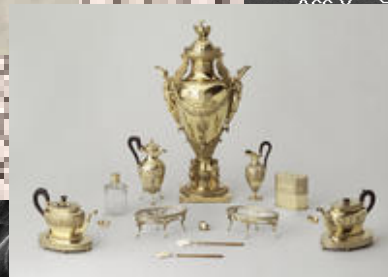
beige silk

longitudinal view
uneven diameter
surface irregular

Acc.V Spot Magn Det WD
0 500x SE 36.7

50 μm

yarn: raw silk



longitudinal view
0.6 μm thick scales
characteristic shape
sheep wool

Acc.V Spot Magn Det WD
10.0 kV 4.0 500x SE 36.7

weft: wool +
degummed silk

cross section
2 separated fibers
triangular section
smooth & transparent
10 μm diameter
degummed silk

20 μm

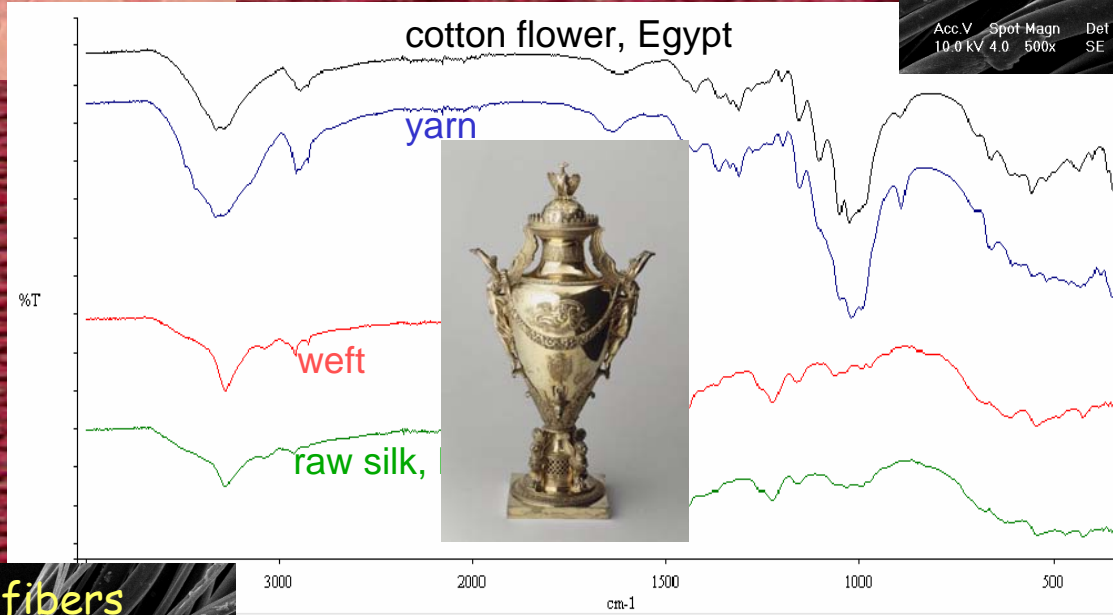
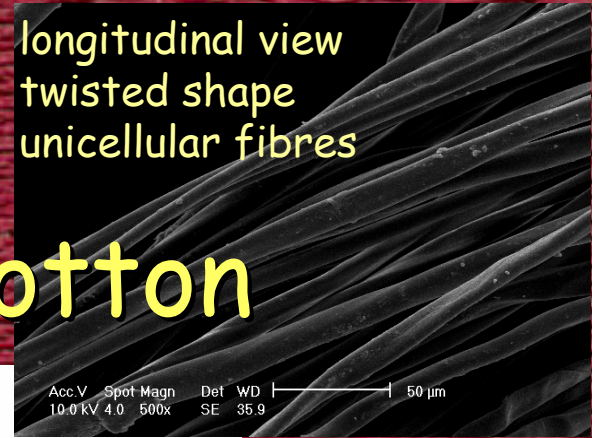
cross section
bean shape
restricted lumen



red silk

yarn: mercerized cotton

longitudinal view
twisted shape
unicellular fibres



cotton flower, Egypt

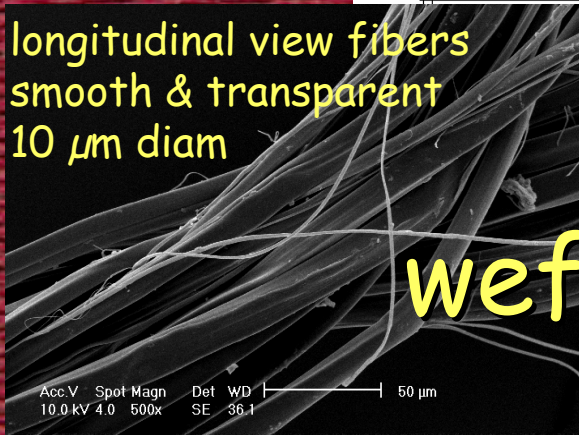
yarn

weft

raw silk,

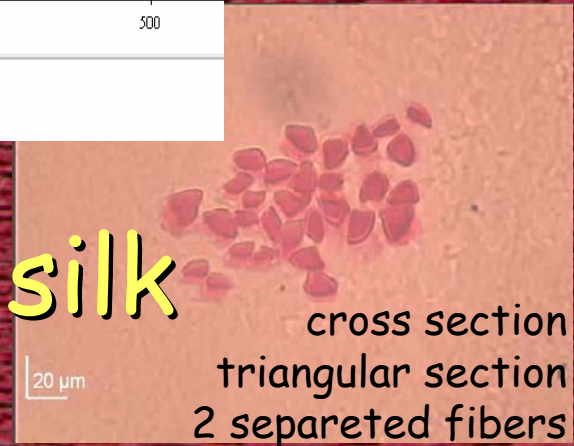


longitudinal view fibers
smooth & transparent
10 µm diam



weft: degummed silk

cross section
triangular section
2 separated fibers



cross section
bean shape
restricted lumen

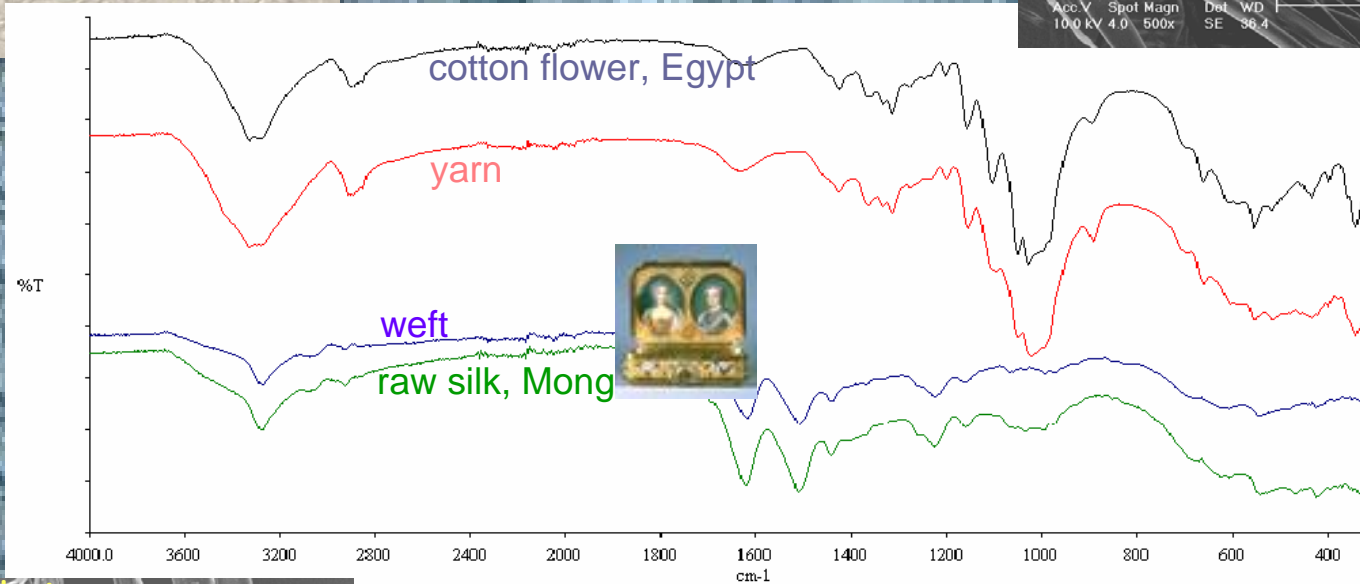
20 µm

blue silk

yarn: mercerized cotton

longitudinal view
twisted shape
unicellular fibres

Acc.V Spot Magn Det WD | 50 µm
10.0 kV 4.0 500x SE 38.4



GG
vitrine tresor de la couronne - GG
vitrine tresor de la couronne - GG
GG

longitudinal view
fibers smooth &
transparent 10 µm diam

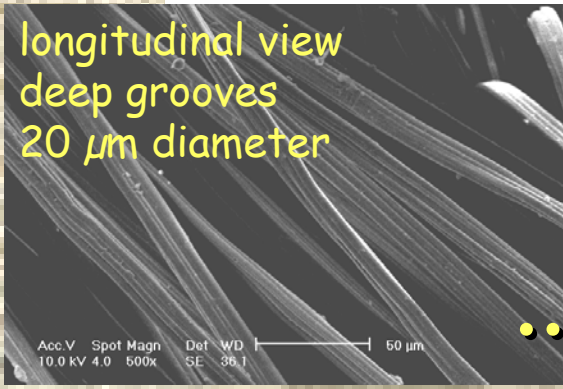
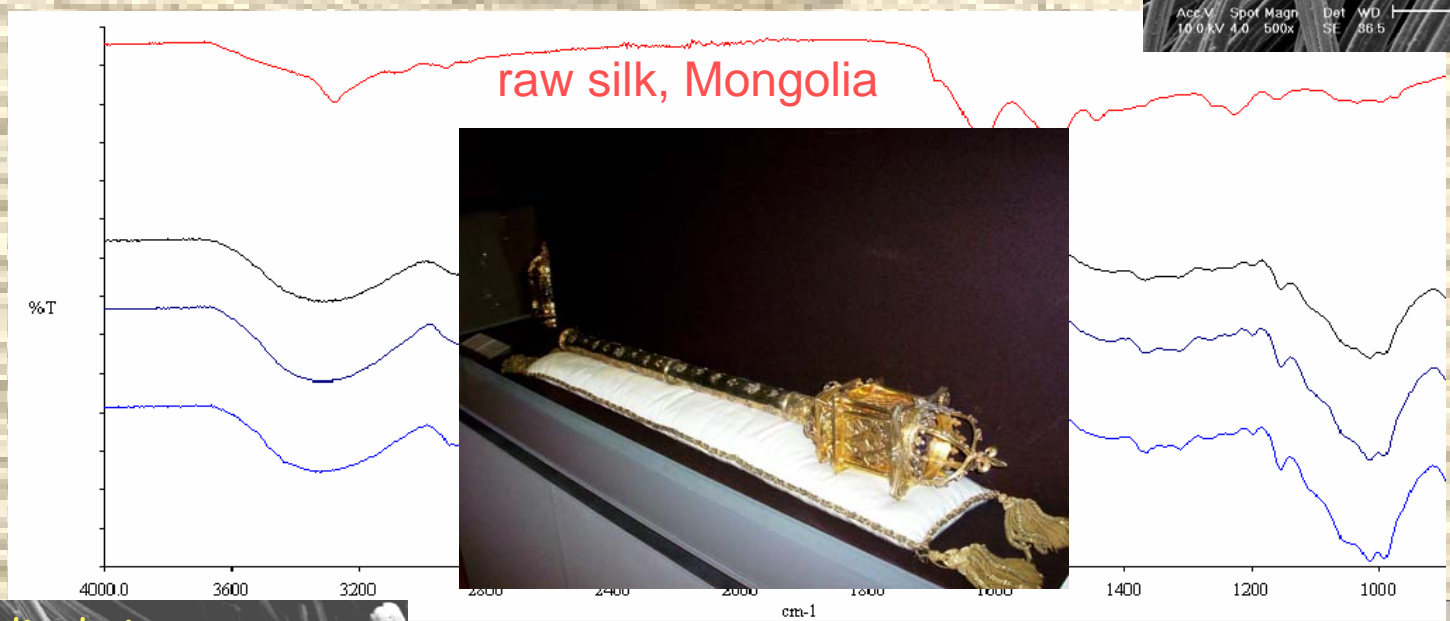
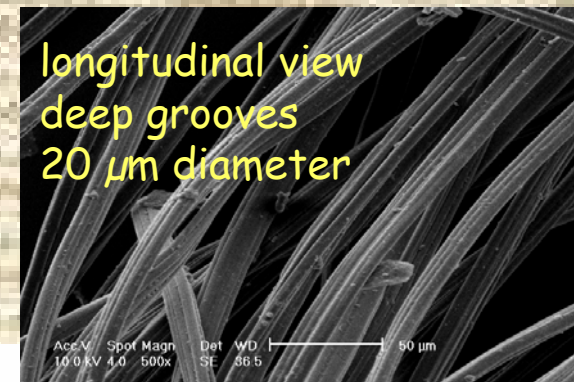
Acc.V Spot Magn Det WD | 50 µm
10.0 kV 4.0 500x SE 38.4

weft: degummed silk

cross section
triangular section
2 separated fibers

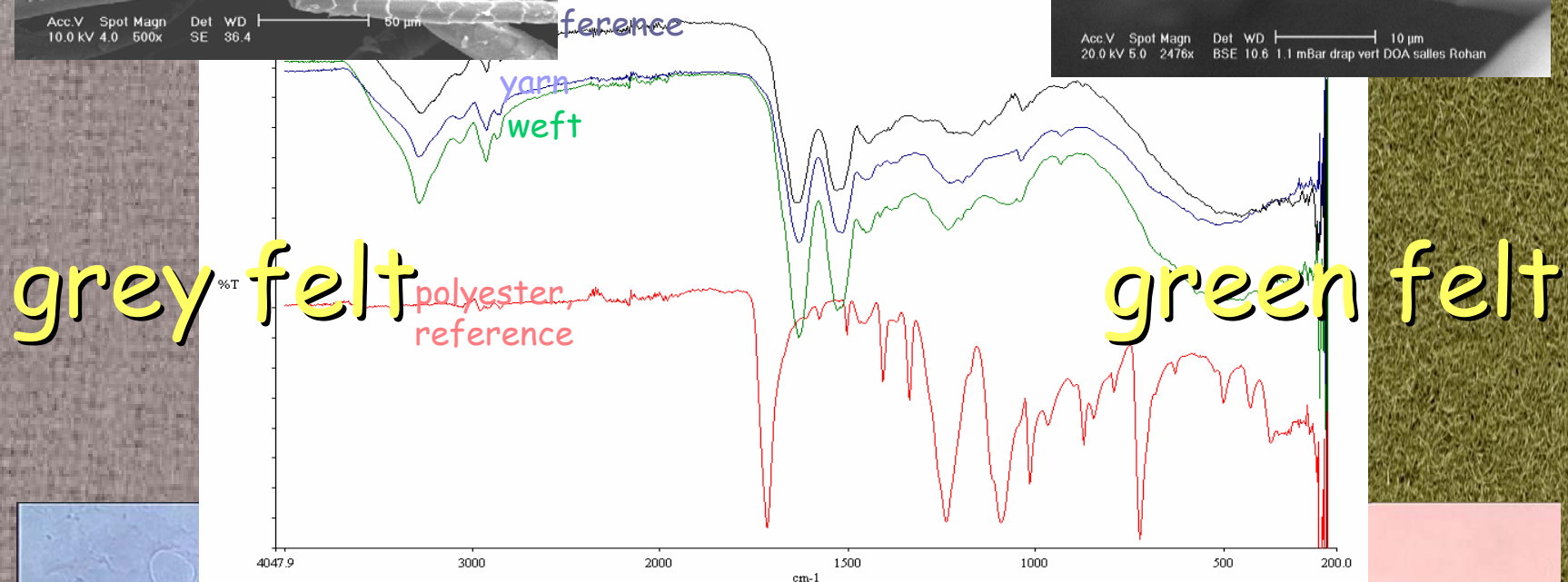
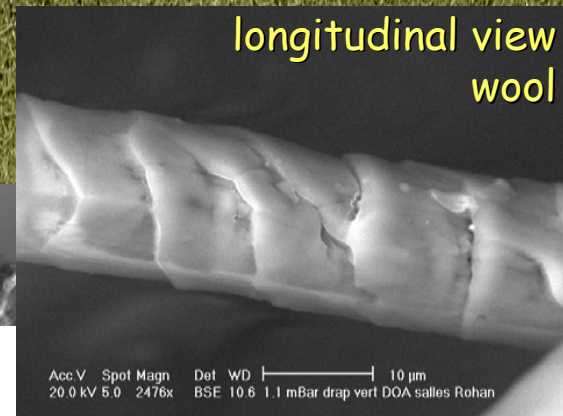
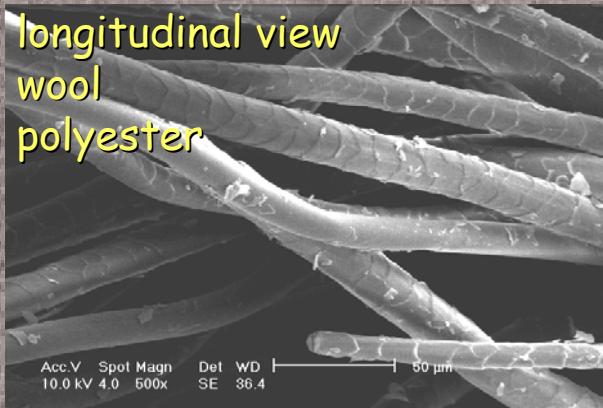
20 µm

white silk...



...100% viscose!





cross section
bean shape
restricted lumen

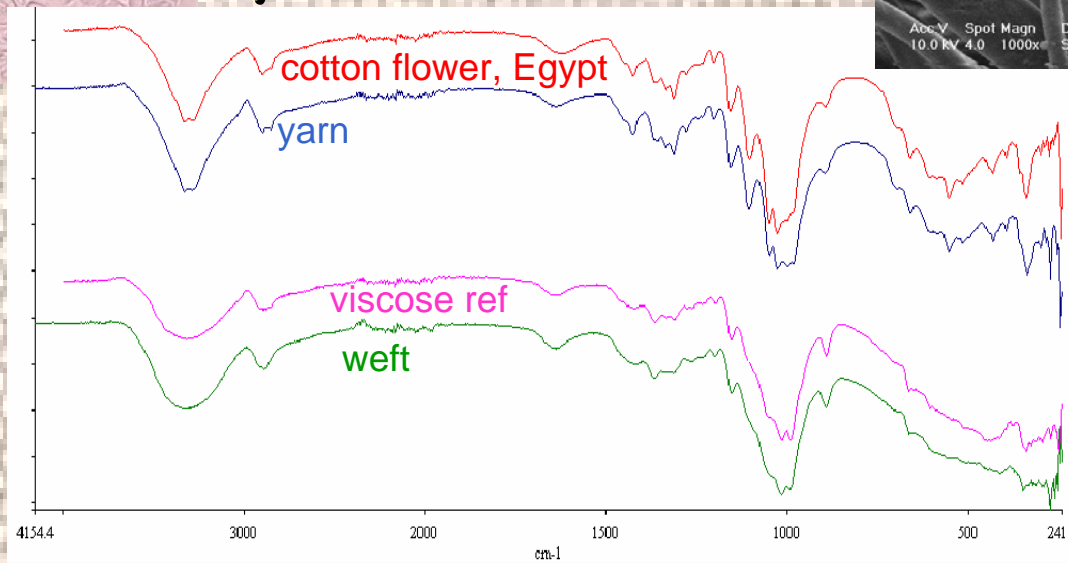
20 μ m

unknown

yarn: cotton

longitudinal view
twisted shape
unicellular fibres

Acc V Spot Magn Det WD | 20 μ m
10.0 kV 4.0 1000x SE 37.8



Golden Gate
GG
70 %T
GG
GG

longitudinal view
deep grooves
20 μ m diameter

Acc V Spot Magn Det WD | 20 μ m
10.0 kV 4.0 1000x SE 20.6

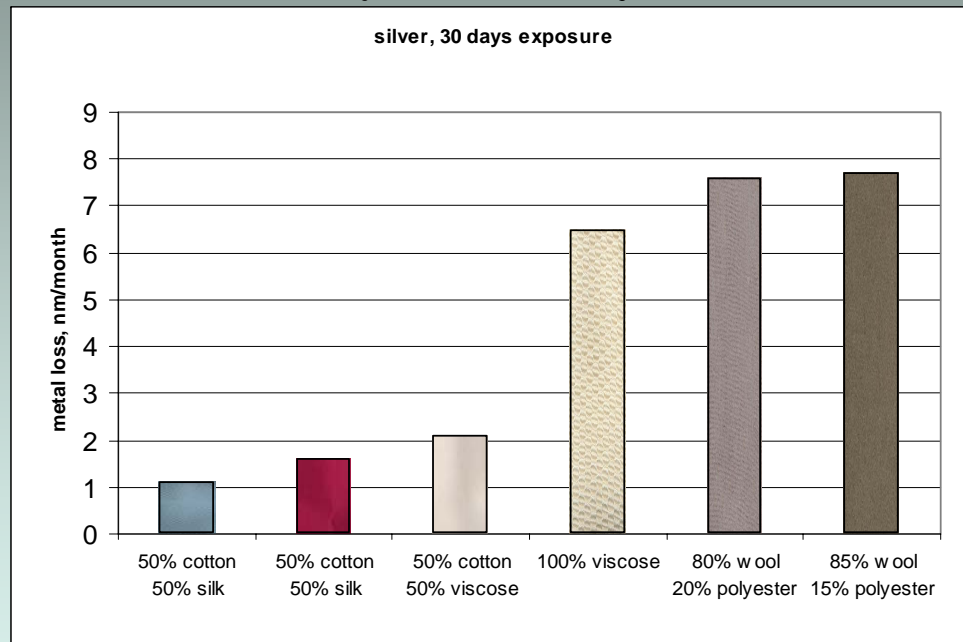
weft: viscose

20 μ m

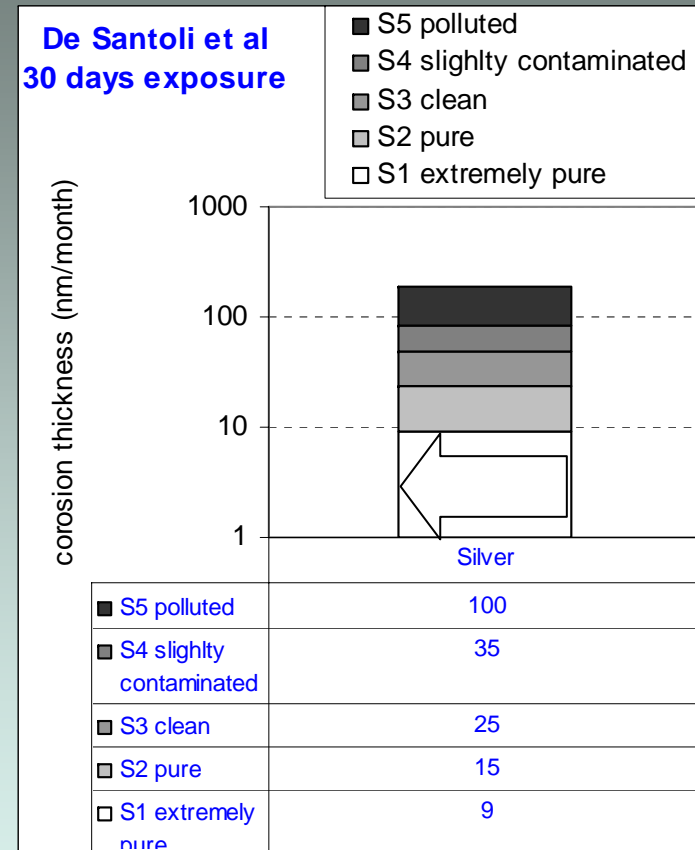
cross section
deep grooves

establish critical limits

30 days exposure



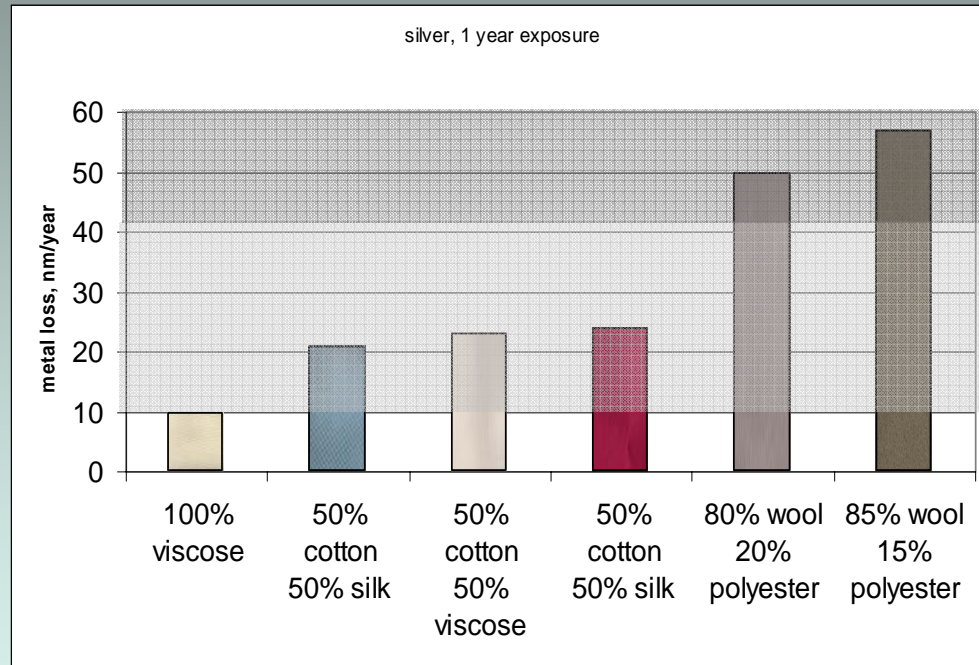
metal loss, resistivity measurements



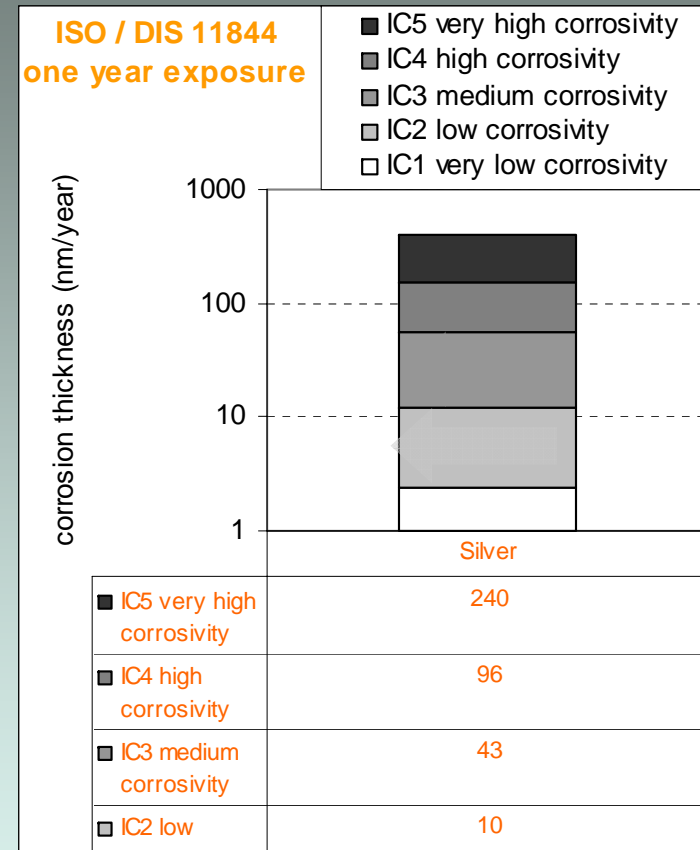
mass gain, QCM

establish critical limits

1 year exposure

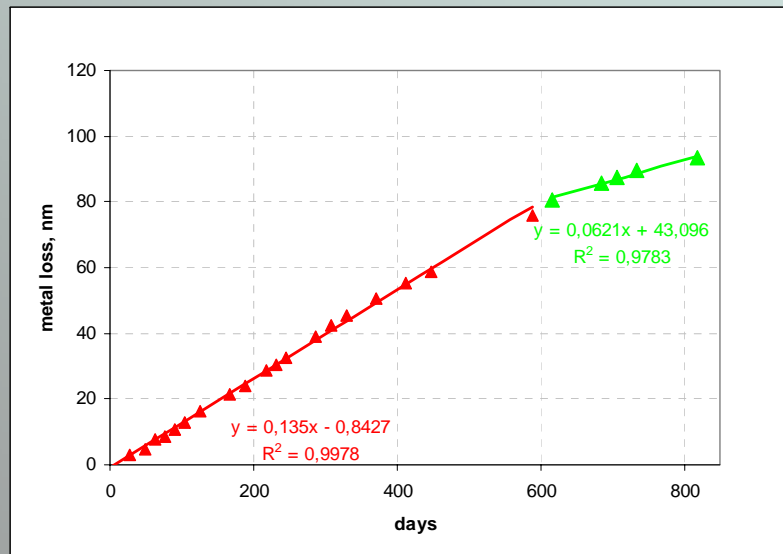


metal loss, resistivity measurements



mass gain,
cathodic reduction or QCM

correct the critical points monitor the prevention measures



- cost of improving the showcases
 - 1 day * 15 showcases = 15 days
 - price of the new textile
- benefits
 - corrosion rate / 2
 - cost of cleaning / 2
 - life span of the objects * 2

wool

integrity of the objects

- yellowing within 2 years
- tarnish layer = 50 - 200 nm thick



conclusions

- upstream
 - control quality of materials
 - collaboration
- this study
 - recognize the potential hazards
 - identify critical points
 - establish critical limits
 - correct the critical points
 - monitor the prevention measures
- downstream
 - record keeping procedures
 - validate the showcases
- nice to know:
 - FT-IR + ATR for rapid identification of textiles



Thank you for your attention

experimental

- textiles
 - SEM-EDS
 - transmission optical microscopy with polarized light
 - FT-IR + ATR
 - Perkin-Elmer Spectrum 2000
 - ATR Golden Gate simple reflection (Specac) + crystal diamond
 - 4000 – 300 cm^{-1}
 - accuracy: 4 cm^{-1}
 - 20 scans
- silver
 - in-situ resistance measurements (based on metal loss)
 - GI-XRD of 3-1 test coupons